



## Technical Data

### VSD Intelligent Pump - GAM 550

Revision no.

Page:  
 1

Receiver	From
----------	------

Company name  
 Respons. Department  
 Person in charge  
 Phone number  
 Fax no  
 E-mail address



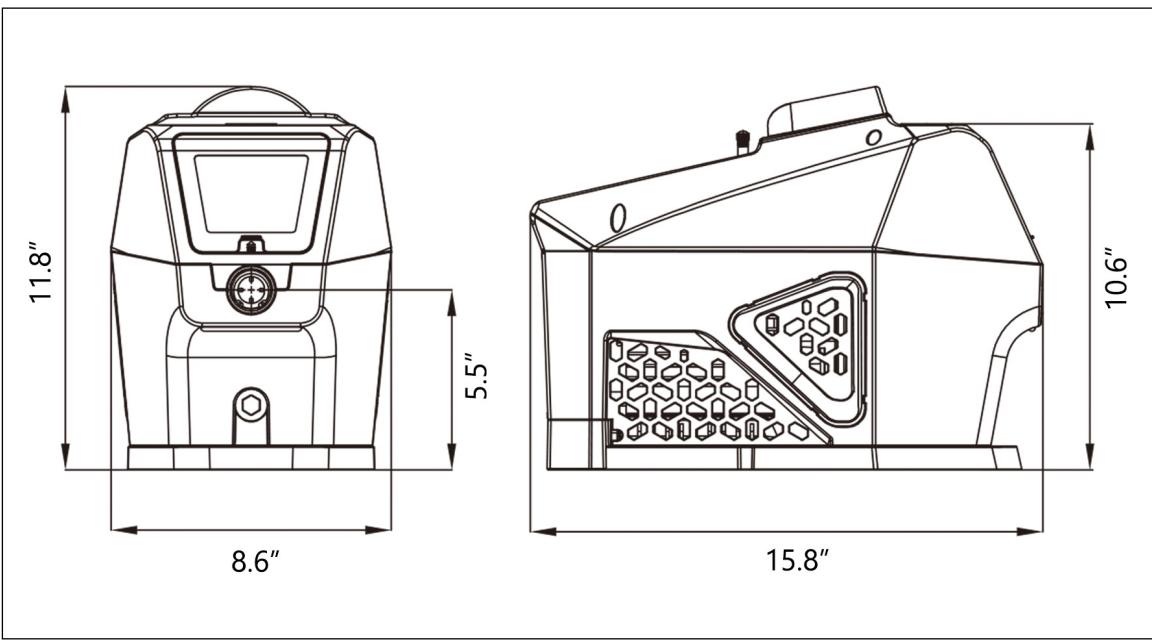


**Brand: Gol Pumps**  
**Model: GAM 550**

**Features:**

- Permanent Magnet Variable Frequency Drive
- Low-Noise Supercharger
- Energy-Saving and Environmentally Friendly
- Multiple Protection

**Dimensions:**



Dimensions (inch)	
Inlet	Outlet
1	1

Project	Project ID	Created by	Created on	Last update
---------	------------	------------	------------	-------------



# Performance Curves

## VSD Intelligent Pump - GAM 550

Revision no.

Page:  
2

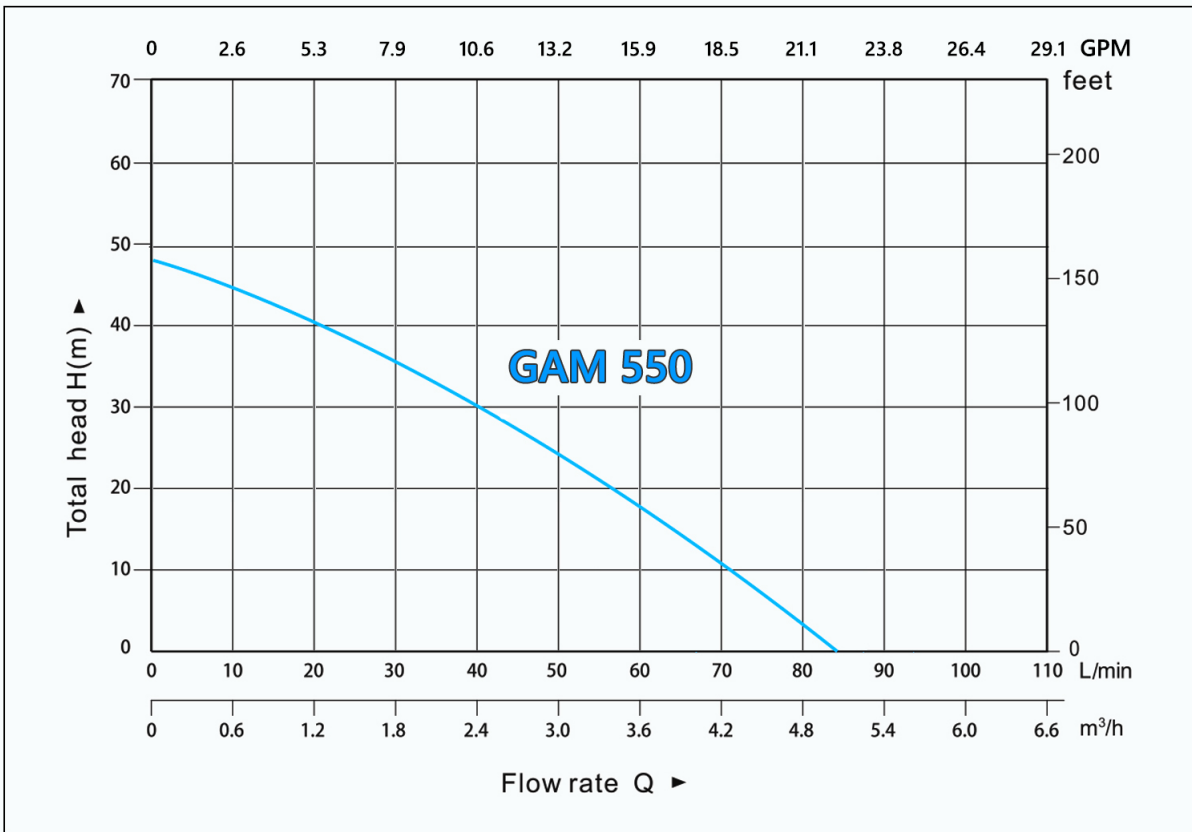
Receiver

From

Company name  
 Respons. Department  
 Person in charge  
 Phone number  
 Fax no  
 E-mail address



Model	Voltage	Frequency	Power		Max. Flow	Max. Head	Rated Flow	Rated Head	Max.Suction
	V	Hz	kW	hp	GPM	ft	GPM	ft	ft
<b>GAM 550</b>	220 - 1Ph	50/60	0.55	0.75	22	157.5	13.2	78.7	26.2



Project	Project ID	Created by	Created on	Last update
---------	------------	------------	------------	-------------



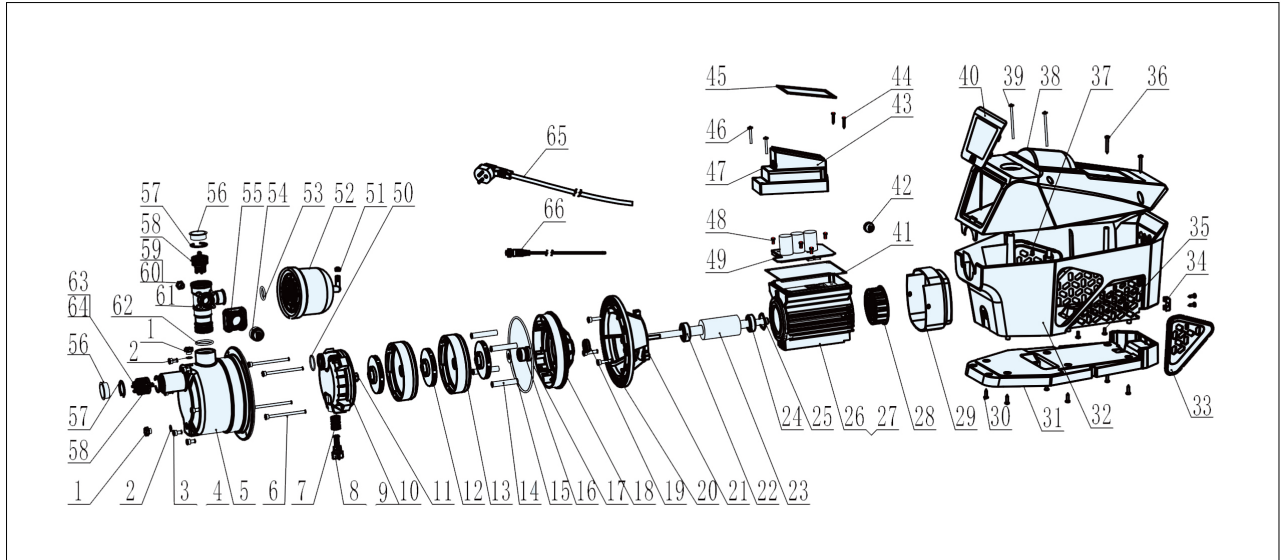
# Parts List

## VSD Intelligent Pump - GAM 550

Revision no. \_\_\_\_\_ Page: 3

Receiver	From

Company name  
 Respons. Department  
 Person in charge  
 Phone number  
 Fax no  
 E-mail address



No	Part	No	Part	No	Part
1	Water filling nozzle bolt	23	Rotors	45	Leather gasket
2	O-ring	24	Bearing 6201-RS	46	Cross recessed pan head screw
3	Outer hexagon screw	25	Wave spring	47	Sealing gasket
4	Flat washer	26	Motor inner shell	48	Cross recessed pan head screw
5	Pump body	27	Winding core	49	Controller panel
6	Hexagon socket screws	28	Fan	50	O-ring 26.3*2.2
7	Check valve spring	29	Fan cover	51	Valve cap
8	Reflux valve	30	Self-tapping screw	52	Pressure tank 1L
9	O-ring	31	Motor plastic shell bottom side	53	O-ring 20*3.5
10	Diffuser	32	Motor plastic shell nether side	54	Pressure sensor
11	M8 screw	33	Motor plastic shell right side	55	Pressure sensor fixed mount
12	Impeller	34	Wire clip	56	Dust cap
13	Dam-board	35	Cross recessed pan head screw	57	Internal clipring
14	Supporting	36	Self-tapping screw	58	Check valve union
15	Flat washer	37	Motor plastic shell left side	59	Temperature sensor
16	Mechanical Seal	38	Motor plastic upper cover	60	O-ring 6*1.8
17	O-ring	39	Self-tapping screw	61	Five way fitting
18	Dam-board	40	Motor plastic cover	62	O-ring 35*3.5
19	Water fender	41	Leather gasket	63	O-ring 26.3*2.2
20	Outer hexagon screw	42	Wire guard	64	1" Check valve base
21	Bracket	43	Control box cover	65	Power cord
22	Bearing 6202-RS	44	Self-tapping screw	66	Daisy chain cable w/ female 3P

Project	Project ID	Created by	Created on	Last update
---------	------------	------------	------------	-------------