



Technical Data

Vertical In-line Pump - EGM65-4020-02204

Revision no.

Page:

1

Receiver

From

 Company name
 Respons. Department
 Person in charge
 Phone number
 Fax no
 E-mail address


Brand: Gol Pumps
Model: EGM65-4020-02204
Flange: ANSI Class 125

Motor (V1)

Model	HP
Y2-100L1-4	3

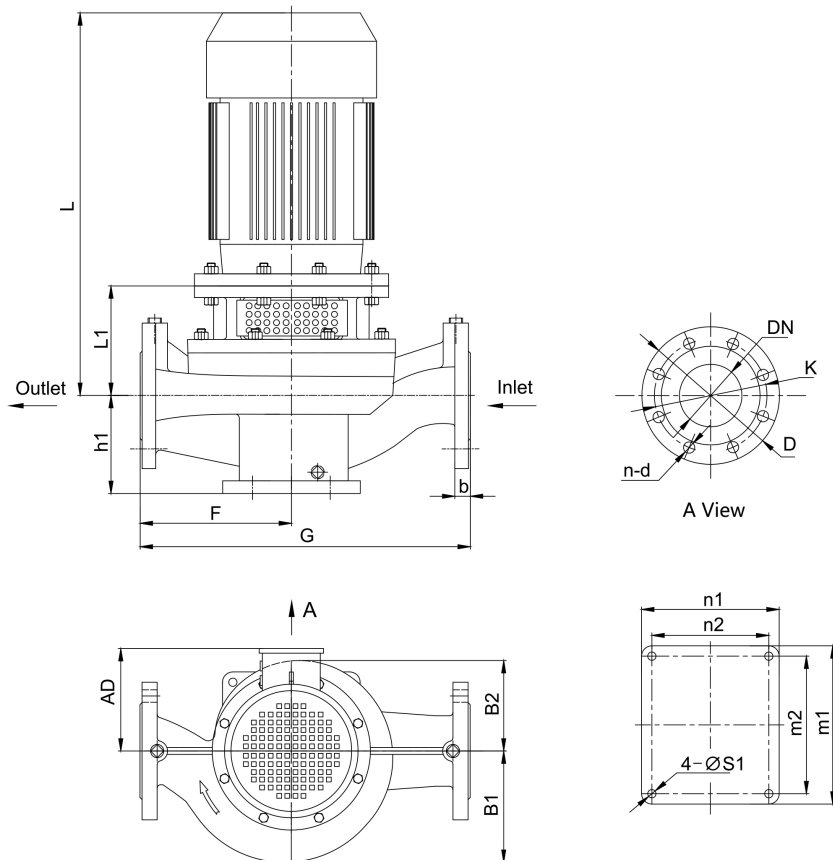
Weight (lb)

Pump	Motor	Pump & Motor
114.4	74.8	189.2

Inlet Outlet

2.5"	2.5"
------	------

Dimensions:



Pump Installation Size (inch)

h1	L1	F	G	L	AD	B1	B2	n2 x m2	n1 x m1	S1	DN	D	K	n - d	b
5.4	6.4	9.4	18.9	19.2	7.1	5.7	5.3	6.7x7.9	7.9x9.1	0.6	2.5	7.1	5.5	4 - ϕ 0.8	-

Project

Project ID

Created by

Created on

Last update



Performance Curves

Vertical In-line Pump - EGM65-4020-02204

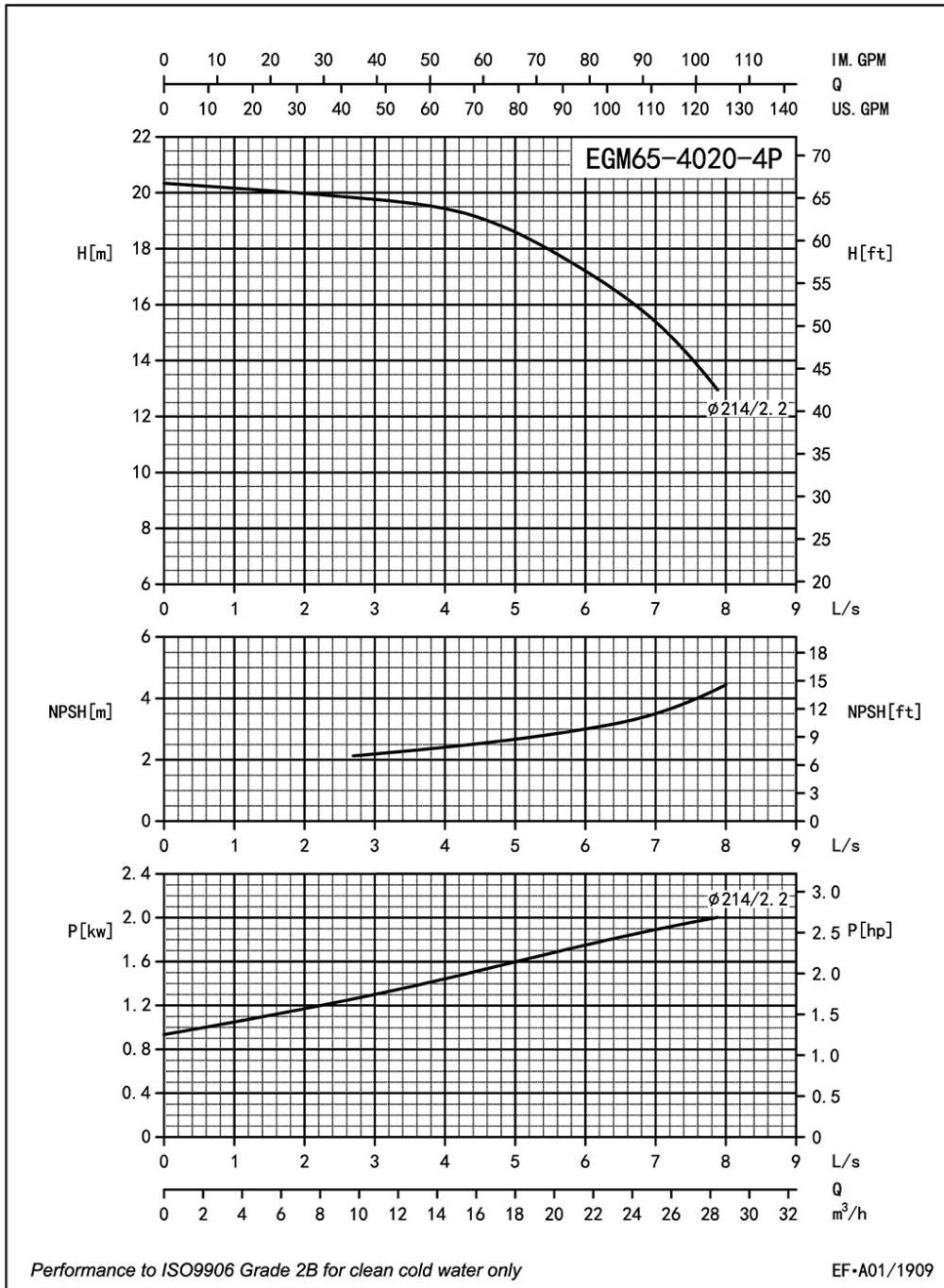
Revision no.

Page:
 2

Receiver From

Company name
 Respons. Department
 Person in charge
 Phone number
 Fax no
 E-mail address

Model	Capacity			Head		Speed	Motor	Voltage	Phase	Impeller Diam.		Eff.	(NPSH)r
	m ³ /h	l/s	gpm	m	ft	r/min	hp	v		mm	inch	%	ft
EGM65-4020-02204	12.6	3.5	55.2	19.6	64	1710	3	230/460	3	214	8.4	49	7.5
	20.9	5.8	91.9	17.5	57		3					58	9.8
	25.2	7	110.3	15.4	51		3					55	11.5



Project	Project ID	Created by	Created on	Last update
---------	------------	------------	------------	-------------



Parts List

Vertical In-line Pump - EGM65-4020-02204

Revision no.

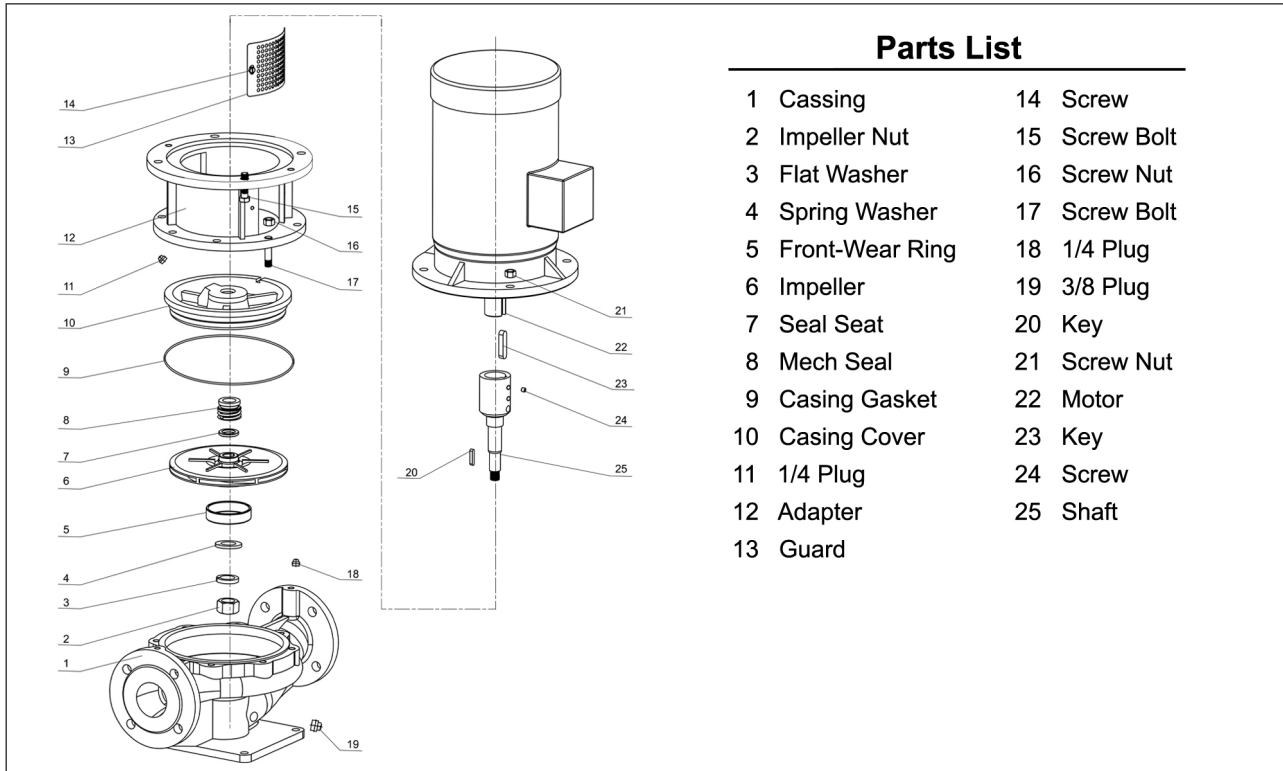
Page:

3

Receiver

From

 Company name
 Respons. Department
 Person in charge
 Phone number
 Fax no
 E-mail address



Project

Project ID

Created by

Created on

Last update