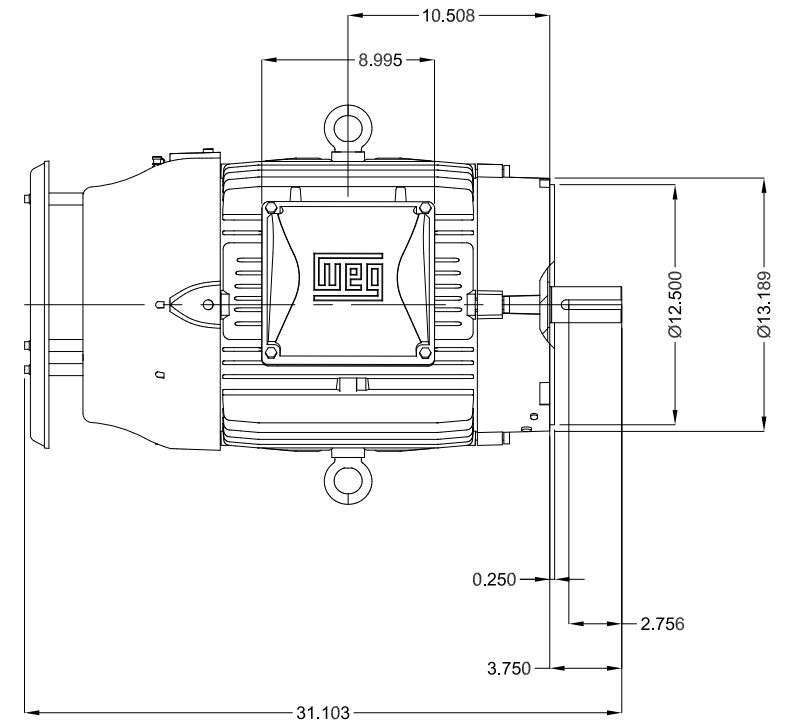
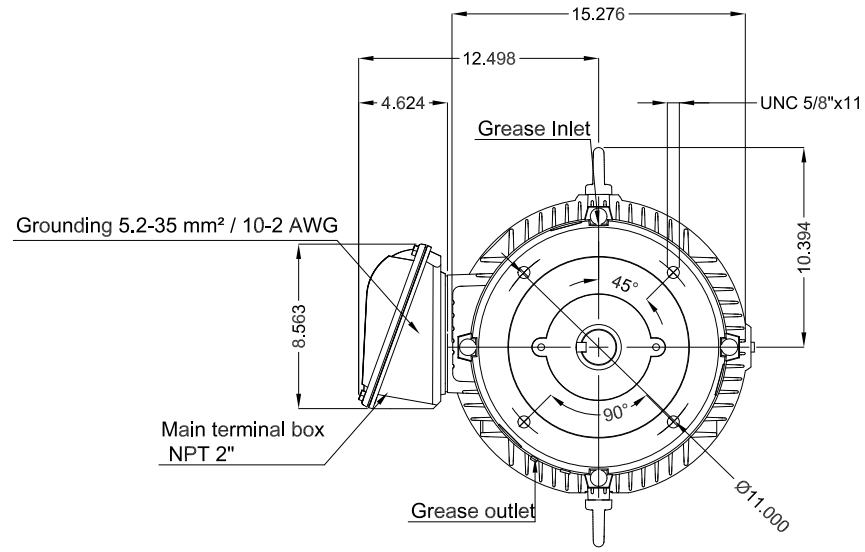
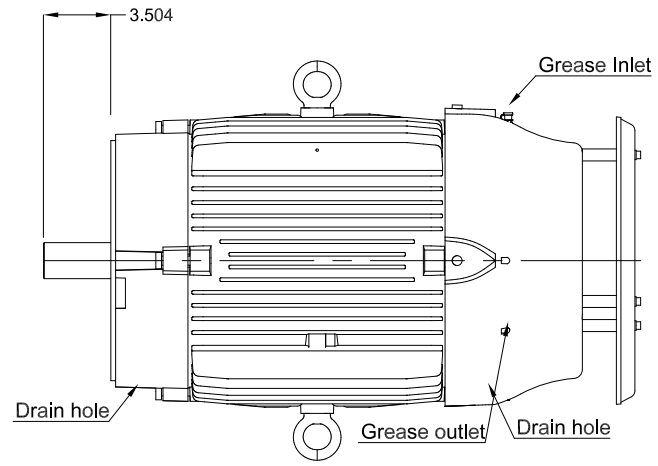


DATA SHEET

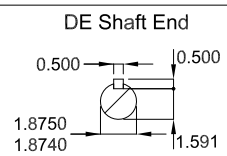


Three Phase Induction Motor - Squirrel Cage

| | | | | | | | | | | | | | | | | |
|---|--|---------------|---|--|---------------|----------------|------|------|------|------|--------------|------|------|------|------|---|
| Customer : | | | | | | | | | | | | | | | | |
| Product line : W22 NEMA Premium Efficiency Three-Phase | Product code : 13472723 Catalog # : 04036ET3ER324TSC-W22 | | | | | | | | | | | | | | | |
| Frame : 324TSC Output : 40 HP (30 kW) Poles : 2 Frequency : 60 Hz Rated voltage : 230/460 V Rated current : 92.6/46.3 A L. R. Amperes : 584/292 A LRC : 6.3x(Code G) No load current : 25.0/12.5 A Rated speed : 3555 rpm Slip : 1.25 % Rated torque : 59.1 ft.lb Locked rotor torque : 250 % Breakdown torque : 240 % Insulation class : F Service factor : 1.25 Moment of inertia (J) : 4.90 sq.ft.lb Design : B | Locked rotor time : 39s (cold) 22s (hot) Temperature rise : 80 K Duty cycle : Cont.(S1) Ambient temperature : -20°C to +40°C Altitude : 1000 m.a.s.l. Protection degree : IP55 Cooling method : IC411 - TEFC Mounting : W-6 Rotation ¹ : Both (CW and CCW) Noise level ² : 76.0 dB(A) Starting method : Direct On Line Approx. weight ³ : 481 lb | | | | | | | | | | | | | | | |
| <table border="1" style="width:100%; border-collapse: collapse;"> <tr> <td>Output</td> <td>25%</td> <td>50%</td> <td>75%</td> <td>100%</td> </tr> <tr> <td>Efficiency (%)</td> <td>91.5</td> <td>91.7</td> <td>92.4</td> <td>92.4</td> </tr> <tr> <td>Power Factor</td> <td>0.56</td> <td>0.80</td> <td>0.86</td> <td>0.88</td> </tr> </table> | Output | 25% | 50% | 75% | 100% | Efficiency (%) | 91.5 | 91.7 | 92.4 | 92.4 | Power Factor | 0.56 | 0.80 | 0.86 | 0.88 | Foundation loads Max. traction : 387 lb Max. compression : 868 lb |
| Output | 25% | 50% | 75% | 100% | | | | | | | | | | | | |
| Efficiency (%) | 91.5 | 91.7 | 92.4 | 92.4 | | | | | | | | | | | | |
| Power Factor | 0.56 | 0.80 | 0.86 | 0.88 | | | | | | | | | | | | |
| Losses at normative operating points (speed;torque), in percentage of rated output power | | | | | | | | | | | | | | | | |
| P1 (0,9;1,0) | P2 (0,5;1,0) | P3 (0,25;1,0) | P4 (0,9;0,5) | P5 (0,5;0,5) | P6 (0,5;0,25) | P7 (0,25;0,25) | | | | | | | | | | |
| 7.4 | 4.7 | 3.8 | 4.6 | 2.2 | 1.7 | 0.8 | | | | | | | | | | |
| Drive end Bearing type : 6312 C3 Sealing : V'Ring Lubrication interval : 6000 h Lubricant amount : 21 g Lubricant type : Mobil Polyrex EM | | | Non drive end Bearing type : 6212 C3 Sealing : V'Ring Lubrication interval : 7000 h Lubricant amount : 13 g | | | | | | | | | | | | | |
| Notes: USABLE @208V 101A SF 1.10 SFA 111A | | | | | | | | | | | | | | | | |
| This revision replaces and cancel the previous one, which must be eliminated. (1) Looking the motor from the shaft end. (2) Measured at 1m and with tolerance of +3dB(A). (3) Approximate weight subject to changes after manufacturing process. (4) At 100% of full load. | | | | These are average values based on tests with sinusoidal power supply, subject to the tolerances stipulated in NEMA MG-1. | | | | | | | | | | | | |
| Rev. | Changes Summary | | | Performed | Checked | Date | | | | | | | | | | |
| Performed by | | | | | | | | | | | | | | | | |
| Checked by | | | | | Page | Revision | | | | | | | | | | |
| Date | 08/01/2024 | | | | 1 / 1 | | | | | | | | | | | |

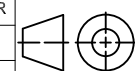


Without vertical jackscrews
 Color RAL 5009
 Painting plan 203A
 Mounting NEMA W-6
 Mounting V18



40 HP 02 Poles 60 Hz

| | | | | | | | | | | | | | | | | |
|-----------|------------|--|-----|--|--|--------------------------|------------|--|--|----------|---------|----------|------|-----|----|--|
| | | | | | | | HYBRISUSER | | | | | | | | 00 | |
| ECM | | | LOC | | | SUMMARY OF MODIFICATIONS | | | | EXECUTED | CHECKED | RELEASED | DATE | VER | | |
| EXECUTED | HYBRISUSER | | | | | | | | | | | | | | | |
| CHECKED | | | | | | | | | | | | | | | | |
| RELEASED | | | | | | | | | | | | | | | | |
| REL. DATE | | | | | | | | | | | | | | | | |



THREE PH. MOTOR W22 NEMA PREM. EFF.
 FRAME 324TSC IP55 TEFC

PREVIEW

WDD 00

SHEET /



Dimensions in inches

A3



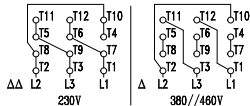
For use on 60Hz
 Class I, Div 2, Gr A, B, C and D - T3
 Class I, Zone 2, IIC - T3
 Class II, Div 2, Gr F and G - T4
 For use on PWM: Gr. A, B, C, D and F,
 VT 1000:1, CT 20:1, 1.00SF - T3A

MODEL 04036ET3ER324TSC-W22

Inverter Duty Motor
 Severe Duty

| | | | | | | |
|------|---------|------------|--------------|--------------|-----------|-------|
| PH3 | 60Hz | Fr. 324TSC | 1000m.a.s.l. | IP55 | TEFC | 481lb |
| V | 230/460 | | | A | 92.6/46.3 | |
| HP | 40 | | | kW | 30 | |
| SF | 1.25 | | | SFA | 116/57.9 | |
| RPM | 3555 | | | PF | 0.88 | |
| AMB | 40°C | INS | cl. F DT80K | NEMA NOM EFF | 92.4% | |
| DUTY | CONT. | DES | B Code G | | | |

40HP 30kW 50Hz 380V 56.3A 2935RPM SF 1.00 EFF 91.0% (IE1)



→ 6312-C3 (21g)
 → 6212-C3 (13g)

MOBIL POLYREX EM (6000h)

MADE IN BRAZIL
 13472723