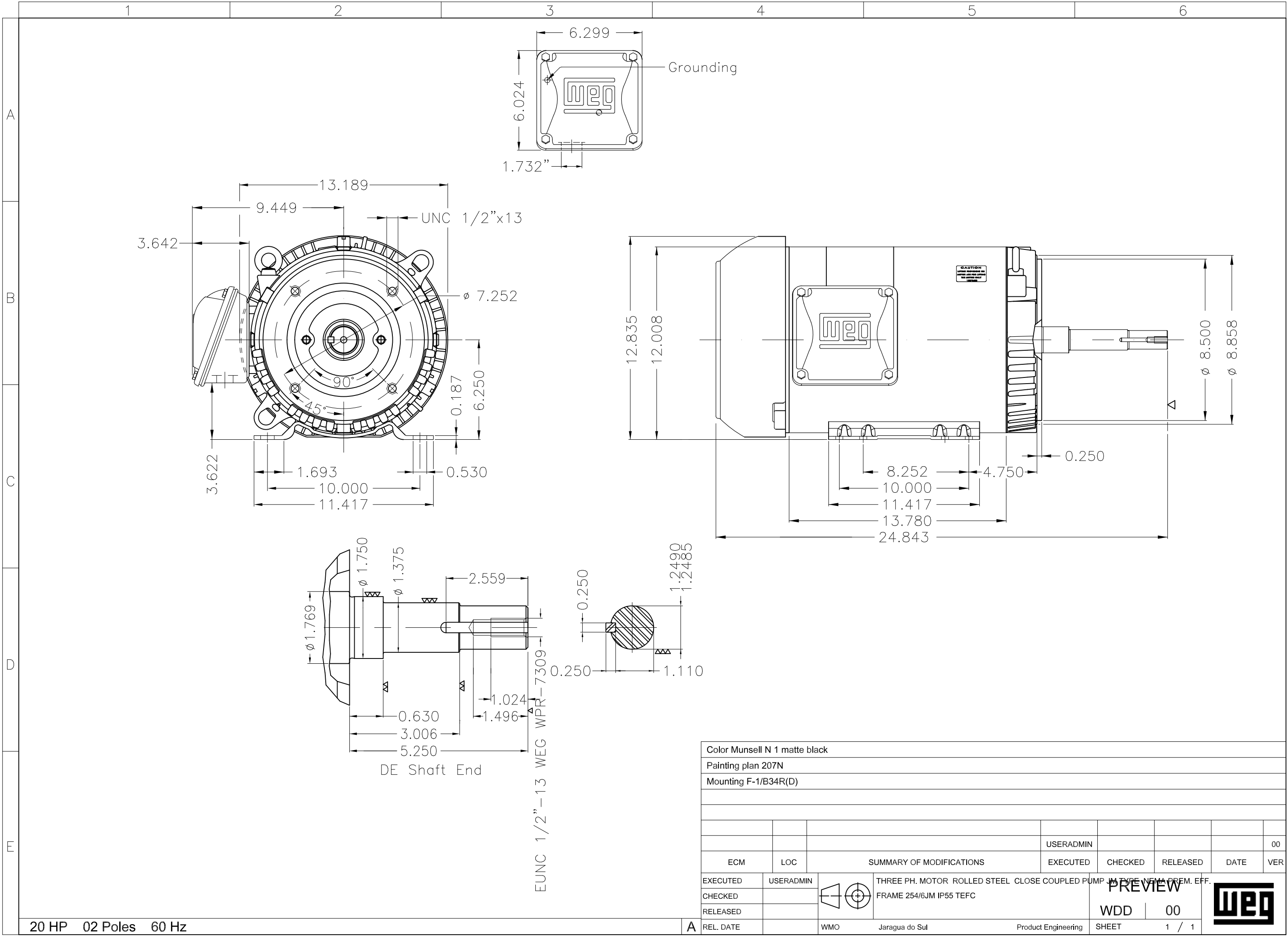


# DATA SHEET



## Three Phase Induction Motor - Squirrel Cage

Customer :					
Product line : Rolled Steel JM Pump NEMA Premium Efficiency Three-Phase		Product code : 13373887			
		Catalog # : 02036ET3E256JM-S			
Frame : 254/6JM	Output : 20 HP (15 kW)	Poles : 2	Frequency : 60 Hz	Rated voltage : 230/460 V	
Rated current : 45.4/22.7 A	L. R. Amperes : 300/150 A	LRC : 6.6x(Code G)	No load current : 13.8/6.88 A	Rated speed : 3515 rpm	
Slip : 2.36 %	Rated torque : 29.9 ft.lb	Locked rotor torque : 200 %	Breakdown torque : 290 %	Insulation class : F	
Service factor : 1.15	Moment of inertia (J) : 1.22 sq.ft.lb	Design : B	Locked rotor time : 21s (cold) 12s (hot)	Temperature rise : 80 K	
			Duty cycle : Cont.(S1)	Ambient temperature : -20°C to +40°C	
			Altitude : 1000 m.a.s.l.	Protection degree : IP55	
			Cooling method : IC411 - TEFC	Mounting : F-1	
			Rotation <sup>1</sup> : Both (CW and CCW)	Noise level <sup>2</sup> : 75.0 dB(A)	
			Starting method : Direct On Line	Approx. weight <sup>3</sup> : 233 lb	
Output	25%	50%	75%	100%	
Efficiency (%)	89.7	90.0	91.0	91.0	
Power Factor	0.55	0.81	0.88	0.91	
		Foundation loads			
		Max. traction : 299 lb			
		Max. compression : 532 lb			
		<u>Drive end</u>	<u>Non drive end</u>		
Bearing type :		6309 Z C3	6208 Z C3		
Sealing :		V'Ring	V'Ring		
Lubrication interval :		15797 h	20000 h		
Lubricant amount :		13 g	8 g		
Lubricant type :		Mobil Polyrex EM			
Notes USABLE @208V 50.2A SF 1.00 SFA 50.2A					
This revision replaces and cancel the previous one, which must be eliminated. (1) Looking the motor from the shaft end. (2) Measured at 1m and with tolerance of +3dB(A). (3) Approximate weight subject to changes after manufacturing process. (4) At 100% of full load.			These are average values based on tests with sinusoidal power supply, subject to the tolerances stipulated in NEMA MG-1.		
Rev.	Changes Summary		Performed	Checked	Date
Performed by					
Checked by					
Date	06/11/2023			Page	Revision
				1 / 1	



20 HP 02 Poles 60 Hz

Color Munsell N 1 matte black					
Painting plan 207N					
Mounting F-1/B34R(D)					
				USERADMIN	00
ECM	LOC	SUMMARY OF MODIFICATIONS		EXECUTED	CHECKED
EXECUTED	USERADMIN	THREE PH. MOTOR ROLLED STEEL CLOSE COUPLED PUMP IN TYPE NEW PREM. EFF.		RELEASED	DATE
CHECKED		FRAME 254/6JM IP55 TEFC			
RELEASED					
REL. DATE		WMO	Jaragua do Sul	Product Engineering	

PREVIEW

WDD 00

SHEET 1 / 1

**NEMA**  
**Premium**3PT9  
**UL** US LISTED  
FOR SAFE AREA**SA**®  
US  
Energy Verified

MADE IN MEXICO

MAT: 13373887 CC029A

W01.TE0IC0X0N

MODEL 02036ET3E256JM-S

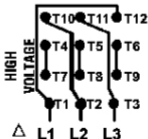
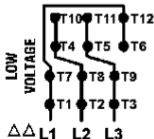
For 60Hz: Class I, Zone 2, IIC  
Class I, Div.2, Gr. A,B,C,D - T3  
Div 2 Inverter Duty (SF1.00)  
CT 2:1/VT 1000:1

PH 3	Hz 60	HP 20
FR 254/6JM		kW 15
DUTY CONT.		V 230/460
ALT 1000 m.a.s.l		A 45.4/22.7
INS CL F ΔT 80K	IP55	SFA 52.2/26.1
AMB 40°C	DES B	SF 1.15
ENCL TEFC	CODE G	PF 0.91
		RPM 3515
		NEMA NOM. EFF 91.0%

ALTERNATE RATING: 15HP	50Hz	190-220/380-415V	SF1.00
40.8-35.8/20.4-19.0A	2925RPM	EFF 91.2%	(IE3) IEC 60034-1

For safe area-Inverter duty motor For 60Hz use on VPWM 1000:1 VT, 10:1 CT

DE 6309-Z-C3	ODE 6208-Z-C3	MOBIL POLYREX EM	15797h
--------------	---------------	------------------	--------



T1-BLU T2-WHT  
T3-ORG T4-YEL  
T5-BLK T6-GRY  
T7-PNK T8-RED  
T9-RED BRK  
T10-CURRY  
T11-GRN T12-VLT

INTERCHANGE ANY TWO LINE WIRES TO REVERSE THE ROTATION

**WARNING:** Motor must be grounded in accordance with local and national electrical codes to prevent serious electrical shocks. Disconnect power source before servicing unit.



**AVERTISSEMENT:** Le moteur doit être mis à la terre conformément aux codes électriques locaux et nationaux afin d'éviter tout choc électrique grave. Déconnectez l'alimentation avant l'entretien de la machine.

