

DATA SHEET

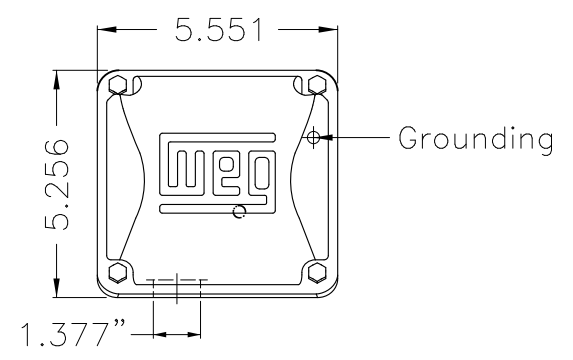


Three Phase Induction Motor - Squirrel Cage

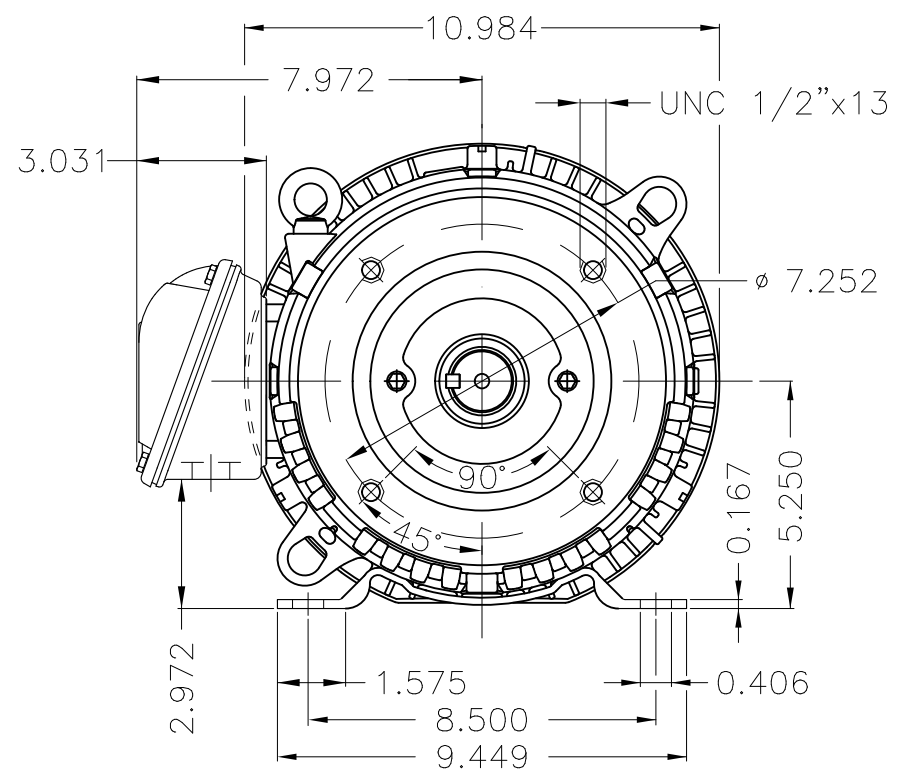
Customer :				
Product line : Rolled Steel JM Pump NEMA Premium Efficiency Three-Phase		Product code : 13181453		
		Catalog # : 01536ET3E215JM-S		
Frame : 213/5JM	Output : 15 HP (11 kW)	Poles : 2	Frequency : 60 Hz	Rated voltage : 230/460 V
Rated current : 34.0/17.0 A	L. R. Amperes : 279/139 A	LRC : 8.2x(Code J)	No load current : 12.4/6.20 A	Rated speed : 3535 rpm
Slip : 1.81 %	Rated torque : 22.3 ft.lb	Locked rotor torque : 280 %	Breakdown torque : 330 %	Insulation class : F
Service factor : 1.15	Moment of inertia (J) : 0.6341 sq.ft.lb	Design : A	Locked rotor time : 12s (cold) 7s (hot)	Temperature rise : 80 K
			Duty cycle : Cont.(S1)	Ambient temperature : -20°C to +40°C
			Altitude : 1000 m.a.s.l.	Protection degree : IP55
			Cooling method : IC411 - TEFC	Mounting : F-1
			Rotation ¹ : Both (CW and CCW)	Noise level ² : 70.0 dB(A)
			Starting method : Direct On Line	Approx. weight ³ : 171 lb
Output	25%	50%	75%	100%
Efficiency (%)	90.0	90.2	91.0	91.0
Power Factor	0.49	0.76	0.85	0.89
Foundation loads				
Max. traction : 329 lb				
Max. compression : 500 lb				
Bearing type :	<u>Drive end</u> 6209 ZZ		<u>Non drive end</u> 6206 ZZ	
Sealing :	V'Ring		Without Bearing Seal	
Lubrication interval :	-		-	
Lubricant amount :	-		-	
Lubricant type :	Mobil Polyrex EM			
Notes USABLE @208V 37.6A SF 1.00 SFA 37.6A				
This revision replaces and cancel the previous one, which must be eliminated. (1) Looking the motor from the shaft end. (2) Measured at 1m and with tolerance of +3dB(A). (3) Approximate weight subject to changes after manufacturing process. (4) At 100% of full load.			These are average values based on tests with sinusoidal power supply, subject to the tolerances stipulated in NEMA MG-1.	
Rev.	Changes Summary		Performed	Checked
Performed by			Page 1 / 1	Revision
Checked by				
Date	03/11/2023			

1 2 3 4 5 6

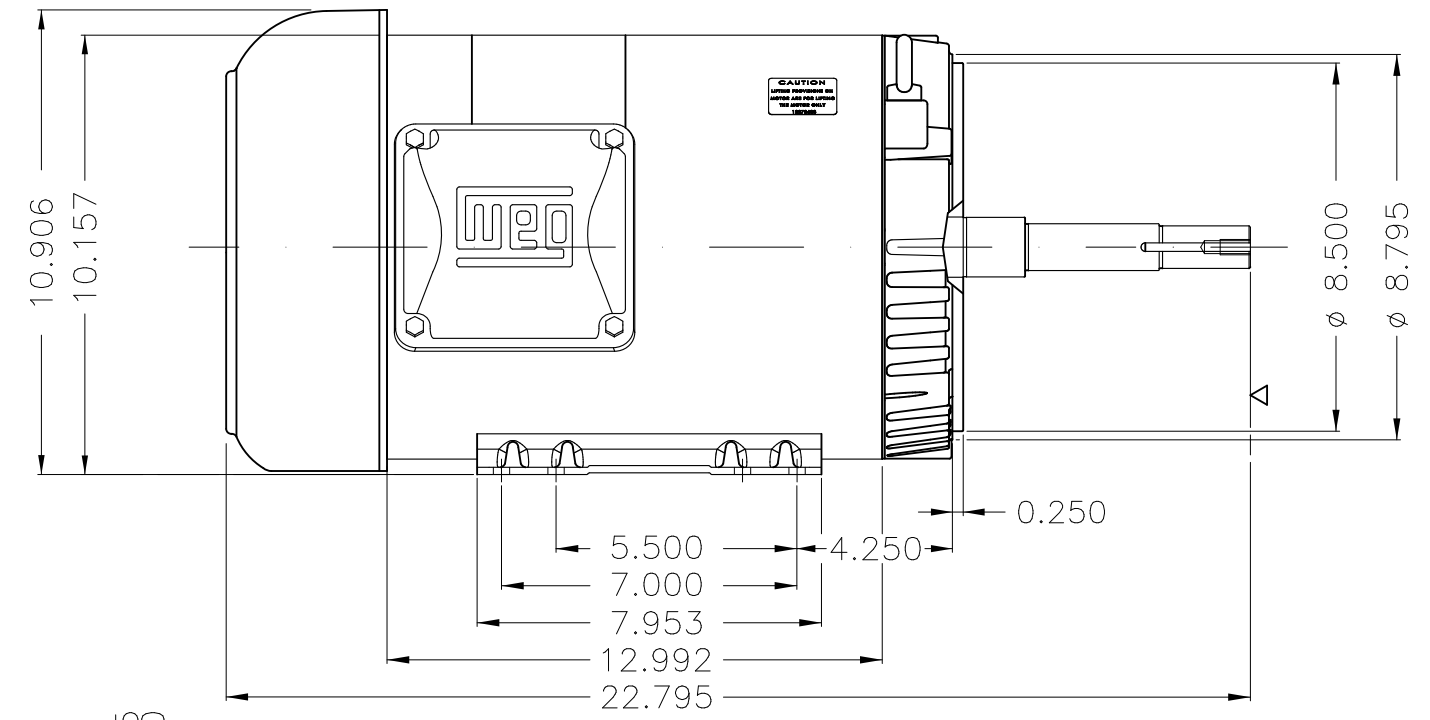
A



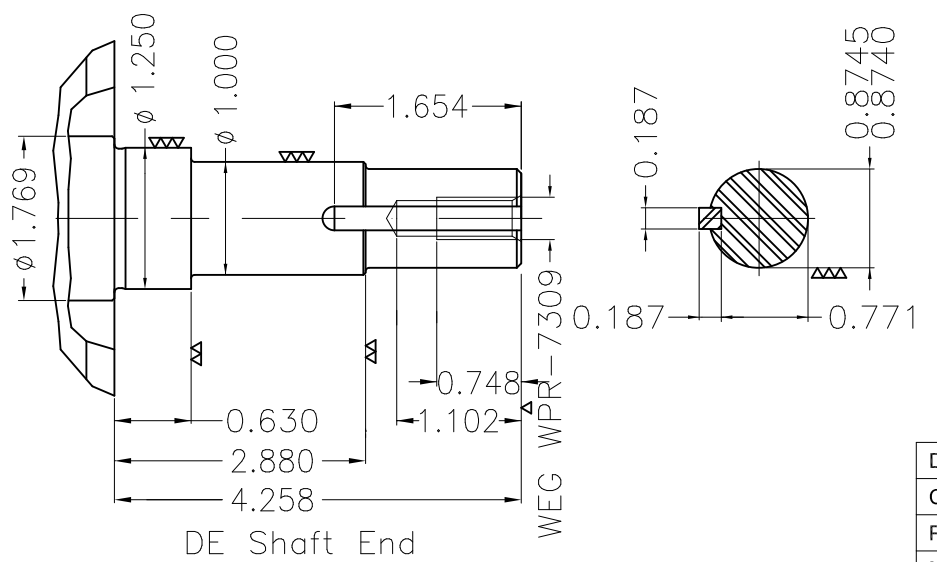
B



C



D



E

EUNC 3/8"-16 WEG WPR-7309

DE Shaft End

Design A									
Color Munsell N 1 matte black									
Painting plan 207N									
Mounting F-1/B34R(D)									
					USERADMIN	00			
ECM	LOC	SUMMARY OF MODIFICATIONS			EXECUTED	CHECKED	RELEASED	DATE	VER
EXECUTED	USERADMIN	THREE PH. MOTOR ROLLED STEEL CLOSE COUPLED PUMP IM TYPE NEMA PREM. EFF.							
CHECKED		FRAME 213/5JM IP55 TEFC							
RELEASED									
REL. DATE		WMO	Jaragua do Sul	Product Engineering	WDD	00			
					SHEET	1 / 1			

15 HP 02 Poles 60 Hz



Dimensions in inches XME A3

**NEMA**
Premium3PT9
UL US LISTED
FOR SAFE AREA**SP** US
Energy Verified

MADE IN MEXICO

MAT: 13181453 CC029A

W01.TE0IC0X0N

MODEL 01536ET3E215JM-S

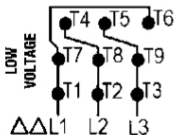
For 60Hz: Class I, Zone 2, IIC
Class I, Div.2, Gr. A,B,C,D - T3
Div 2 Inverter Duty (SF1.00)
CT 2:1/VT 1000:1

PH 3	Hz 60	HP 15
FR 213/5JM		kW 11
DUTY CONT.		V 230/460
ALT 1000 m.a.s.l		A 34.0/17.0
INS CL F ΔT 80K	IP55	SFA 39.1/19.5
AMB 40°C	DES A	SF 1.15
ENCL TEFC	CODE J	PF 0.89
		RPM 3535
		NEMA NOM. EFF 91.0%

ALTERNATE RATING: 10HP	50Hz	190-220/380-415V	SF1.15
28.8-26.2/14.4-13.9A	2945RPM	EFF 91.1%	(IE3) IEC 60034-1

For safe area-Inverter duty motor For 60Hz use on VPWM 1000:1 VT, 10:1 CT

DE 6209-ZZ	ODE 6206-ZZ	MOBIL POLYREX EM
------------	-------------	------------------



T1-BLU	T2-WHT
T3-ORG	T4-YEL
T5-BLK	T6-GRY
T7-PNK	T8-RED
T9-RED BRK	

INTERCHANGE ANY TWO LINE WIRES TO REVERSE THE ROTATION

WARNING: Motor must be grounded in accordance with local and national electrical codes to prevent serious electrical shocks. Disconnect power source before servicing unit.



AVERTISSEMENT: Le moteur doit être mis à la terre conformément aux codes électriques locaux et nationaux afin d'éviter tout choc électrique grave. Déconnectez l'alimentation avant l'entretien de la machine.

