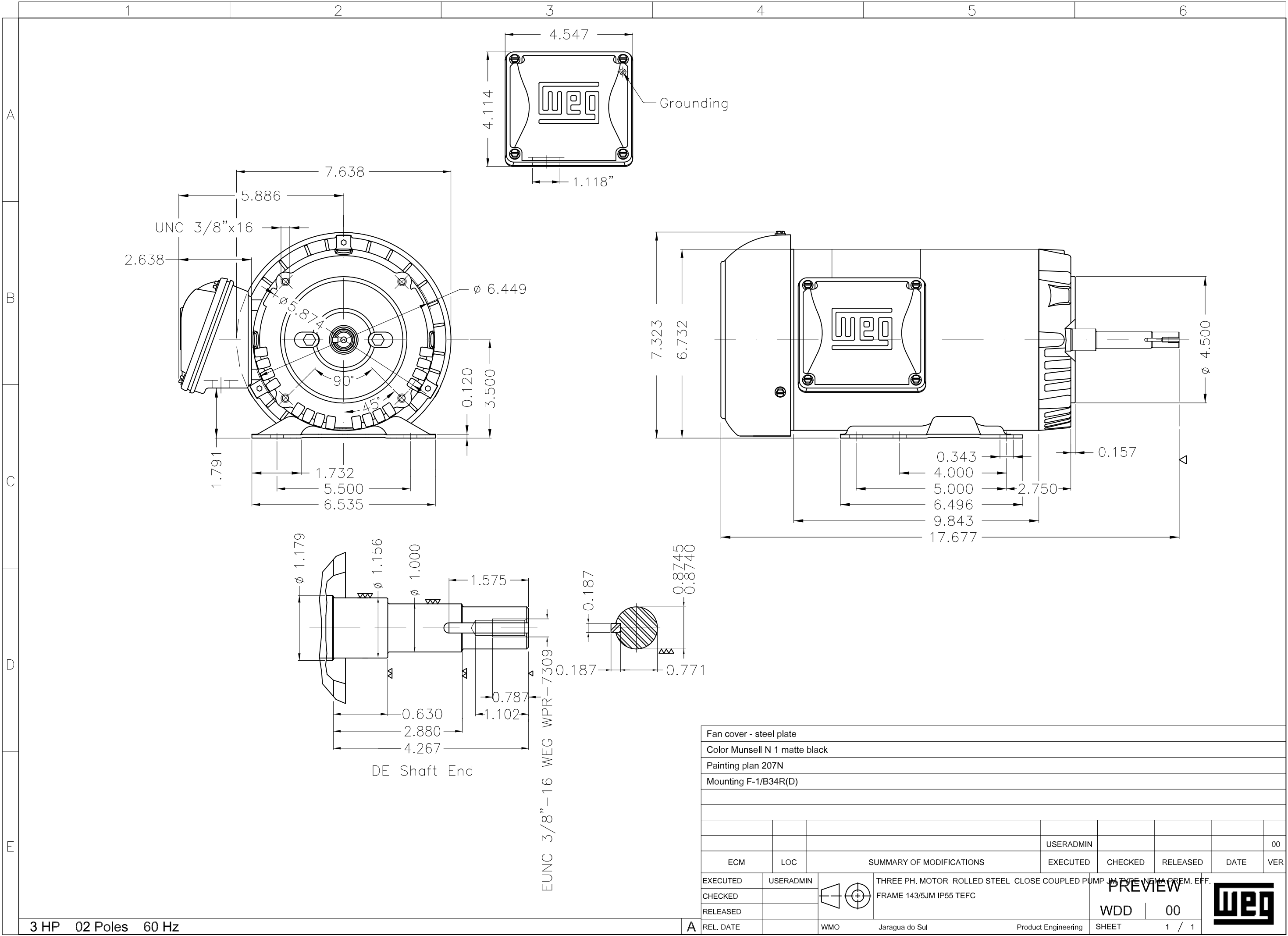


DATA SHEET



Three Phase Induction Motor - Squirrel Cage

Customer :						
Product line : Rolled Steel JM Pump NEMA Premium Efficiency Three-Phase			Product code : 14808665		Catalog # : 00336ET3E145JM-S	
Frame : 143/5JM Output : 3 HP (2.2 kW) Poles : 2 Frequency : 60 Hz Rated voltage : 230/460 V Rated current : 7.02/3.51 A L. R. Amperes : 66.7/33.3 A LRC : 9.5x(Code K) No load current : 2.56/1.28 A Rated speed : 3500 rpm Slip : 2.78 % Rated torque : 4.50 ft.lb Locked rotor torque : 300 % Breakdown torque : 380 % Insulation class : F Service factor : 1.15 Moment of inertia (J) : 0.1663 sq.ft.lb Design : B			Locked rotor time : 18s (cold) 10s (hot) Temperature rise : 80 K Duty cycle : Cont.(S1) Ambient temperature : -20°C to +40°C Altitude : 1000 m.a.s.l. Protection degree : IP55 Cooling method : IC411 - TEFC Mounting : F-1 Rotation ¹ : Both (CW and CCW) Noise level ² : 68.0 dB(A) Starting method : Direct On Line Approx. weight ³ : 52.1 lb			
Output 25% 50% 75% 100% Efficiency (%) 83.6 84.0 86.5 86.5 Power Factor 0.51 0.78 0.87 0.91			Foundation loads Max. traction : 135 lb Max. compression : 187 lb			
Losses at normative operating points (speed;torque), in percentage of rated output power						
P1 (0,9;1,0)	P2 (0,5;1,0)	P3 (0,25;1,0)	P4 (0,9;0,5)	P5 (0,5;0,5)	P6 (0,5;0,25)	P7 (0,25;0,25)
14.5	10.8	9.9	8.0	4.4	3.0	1.7
Bearing type : Sealing : Lubrication interval : Lubricant amount : Lubricant type :			Drive end 6206 ZZ V'Ring - - Mobil Polyrex EM		Non drive end 6203 ZZ Without Bearing Seal - -	
Notes USABLE @208V 7.76A SF 1.00 SFA 7.76A						
This revision replaces and cancel the previous one, which must be eliminated. (1) Looking the motor from the shaft end. (2) Measured at 1m and with tolerance of +3dB(A). (3) Approximate weight subject to changes after manufacturing process. (4) At 100% of full load.			These are average values based on tests with sinusoidal power supply, subject to the tolerances stipulated in NEMA MG-1.			
Rev.	Changes Summary			Performed	Checked	Date
Performed by						
Checked by					Page	Revision
Date	03/11/2023				1 / 1	



Fan cover - steel plate									
Color Munsell N 1 matte black									
Painting plan 207N									
Mounting F-1/B34R(D)									
					USERADMIN	00			
ECM	LOC	SUMMARY OF MODIFICATIONS			EXECUTED	CHECKED	RELEASED	DATE	VER
EXECUTED	USERADMIN	THREE PH. MOTOR ROLLED STEEL CLOSE COUPLED PUMP IN TYPE NEW PREM. EFF.							
CHECKED		FRAME 143/5JM IP55 TEFC							
RELEASED									
REL. DATE		WMO	Jaragua do Sul	Product Engineering	WDD	00			
					SHEET	1 / 1			

3 HP 02 Poles 60 Hz

**NEMA**
Premium3PT9
UL US LISTED
FOR SAFE AREA**SP** US
Energy Verified

MADE IN MEXICO

MAT: 14808665 CC029A

W01.TE0IC0X0N

MODEL 00336ET3E145JM-S

01NOV2023 B/N:

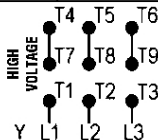
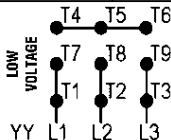
For 60Hz: Class I, Zone 2, IIC
Class I, Div.2, Gr. A,B,C,D - T3
Div 2 Inverter Duty (SF1.00)
CT 2:1/VT 1000:1

PH 3	Hz 60	HP 3.0
FR 143/5JM		KW 2.2
DUTY CONT.		V 230/460
ALT 1000 m.a.s.l		A 7.02/3.51
INS CL F ΔT 80K	IP55	SFA 8.07/4.04
AMB 40°C	DES B	SF 1.15
ENCL TEFC	CODE K	PF 0.91
		RPM 3500
		NEMA NOM. EFF 86.5%

ALTERNATE RATING: 3.0HP	50Hz	190-220/380-415V	SF1.15
8.50-7.38/4.25-3.91A	2870RPM	EFF 84.6%	{IE2} IEC 60034-1

For safe area-Inverter duty motor For 60Hz use on VPWM 1000:1 VT, 10:1 CT

DE 6206-ZZ	ODE 6203-ZZ	MOBIL POLYREX EM
------------	-------------	------------------



T1-BLU T2-WHT
T3-ORG T4-YEL
T5-BLK T6-GRY
T7-PNK T8-RED
T9-RED BRK

INTERCHANGE ANY TWO LINE WIRES TO REVERSE THE ROTATION

WARNING: Motor must be grounded in accordance with local and national electrical codes to prevent serious electrical shocks. Disconnect power source before servicing unit.



AVERTISSEMENT: Le moteur doit être mis à la terre conformément aux codes électriques locaux et nationaux afin d'éviter tout choc électrique grave. Déconnectez l'alimentation avant l'entretien de la machine.

