

DATA SHEET



Three Phase Induction Motor - Squirrel Cage

Customer :					
Product line : Rolled Steel Premium Efficiency Three-Phase		Product code : 13089807			
		Catalog # : 00318OT3E56Z-S			
Frame	: 56HZ	Locked rotor time	: 21s (cold) 12s (hot)		
Output	: 3 HP (2.2 kW)	Temperature rise	: 80 K		
Poles	: 4	Duty cycle	: Cont.(S1)		
Frequency	: 60 Hz	Ambient temperature	: -20°C to +40°C		
Rated voltage	: 208-230/460 V	Altitude	: 1000 m.a.s.l.		
Rated current	: 8.79-7.94/3.97 A	Cooling method	: IC01 - ODP		
L. R. Amperes	: 66.8-60.3/30.2 A	Mounting	: F-1		
LRC	: 7.6x(Code K)	Rotation ¹	: Both (CW and CCW)		
No load current	: 3.62-4.20/2.10 A	Noise level ²	: 52.0 dB(A)		
Rated speed	: 1735 rpm	Starting method	: Direct On Line		
Slip	: 3.61 %	Approx. weight ³	: 43.0 lb		
Rated torque	: 9.08 ft.lb				
Locked rotor torque	: 270 %				
Breakdown torque	: 300 %				
Insulation class	: F				
Service factor	: 1.15				
Moment of inertia (J)	: 0.1424 sq.ft.lb				
Design	: A				
Output	25%	50%	75%	100%	
Efficiency (%)	0.000	86.5	86.5	86.9	
Power Factor	0.00	0.59	0.72	0.80	
Foundation loads					
Max. traction : 246 lb					
Max. compression : 289 lb					
Bearing type	:	<u>Drive end</u> 6205 ZZ	<u>Non drive end</u> 6202 ZZ		
Sealing	:	Without Bearing Seal	Without Bearing Seal		
Lubrication interval	:	0 h	0 h		
Lubricant amount	:	0 g	0 g		
Lubricant type	:	Mobil Polyrex EM			
Notes					
This revision replaces and cancel the previous one, which must be eliminated.					
(1) Looking the motor from the shaft end.					
(2) Measured at 1m and with tolerance of +3dB(A).					
(3) Approximate weight subject to changes after manufacturing process.					
(4) At 100% of full load.					
These are average values based on tests with sinusoidal power supply, subject to the tolerances stipulated in NEMA MG-1.					
Rev.	Changes Summary		Performed	Checked	Date
Performed by					
Checked by					
Date	06/11/2023			Page	Revision
				1 / 1	

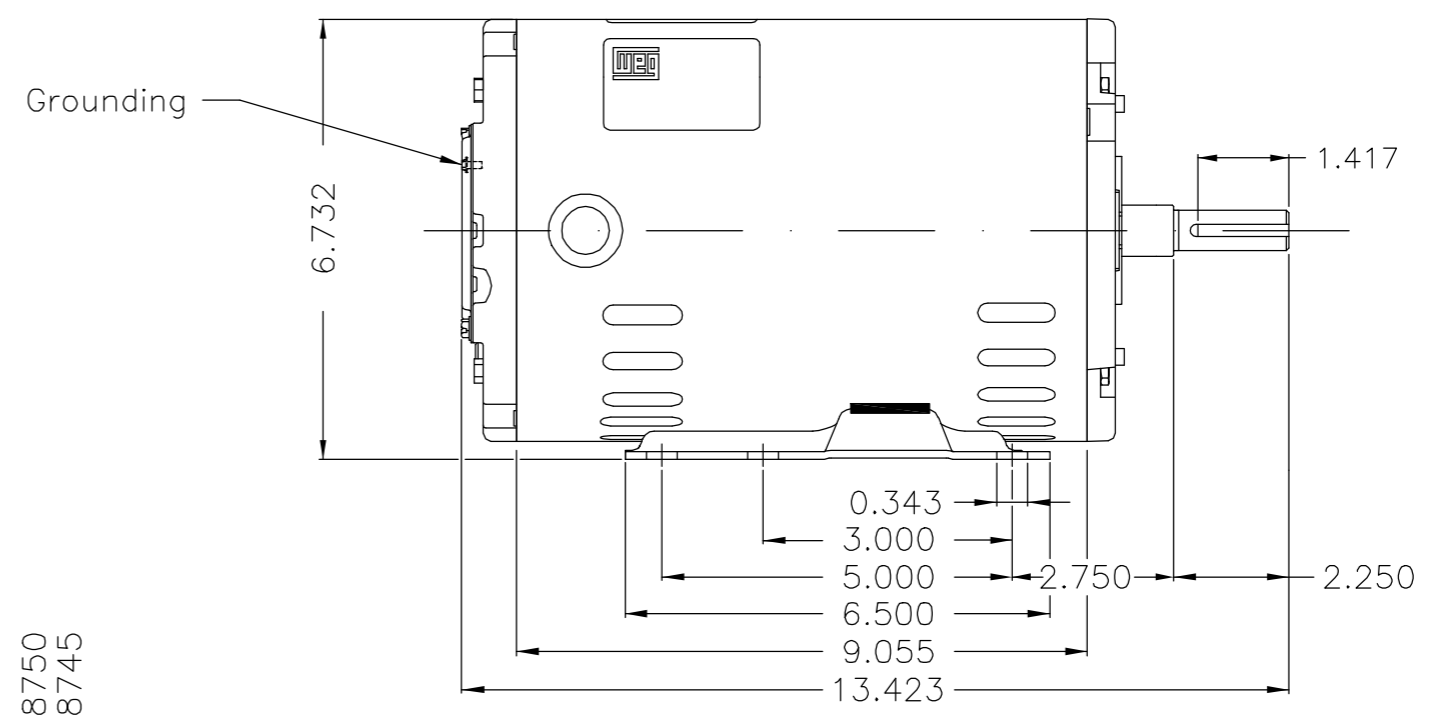
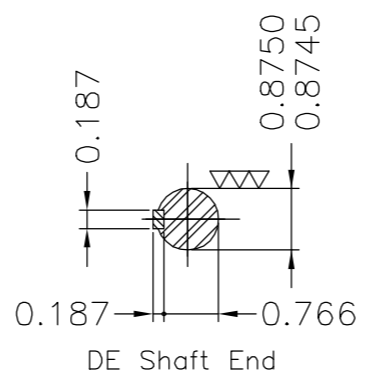
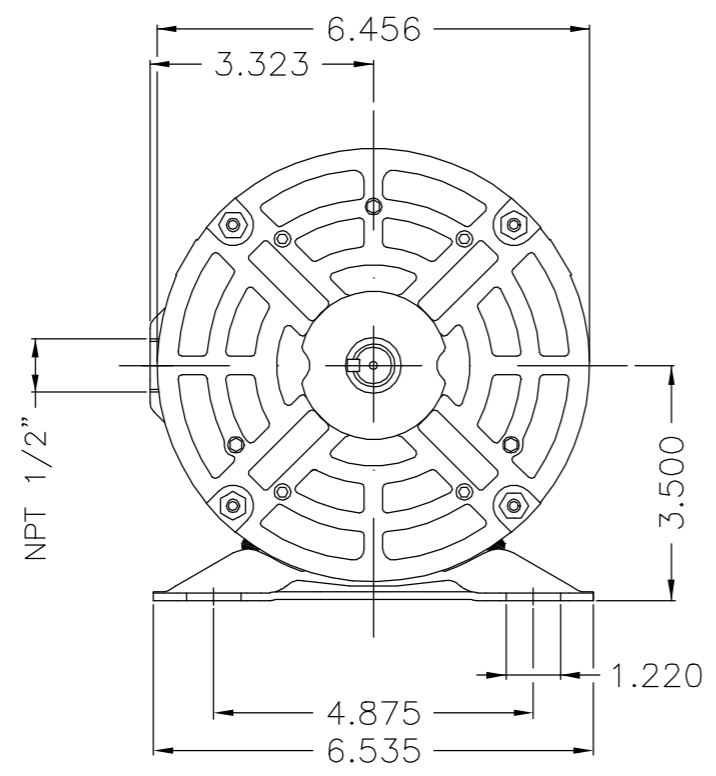
EJE/SHAFT	
ESTÁNDAR/STANDARD	
OPCIONAL/OPTIONAL	
ESPECIAL/SPECIAL	X

Dimensiones en pulgadas
Dimensions in inches

CERTIFIED WEG MOTORES
Certified document.
Not subject to changes.

THIS IS AN UPDATED REVISION, THE PREVIOUS ONE MUST BE DISREGARDED.

A
B
C
D
E



Reforzar la pata con 2 puntos de soldadura mig / Supplied with reinforced weld on foot

Forma constructiva F-1/B3R(D) / Mounting F-1/B3R(D)

WEG ELECTRIC CORPORATION - WEC

500001178683	A-5	CERTIFIED	CESTRELLA	CRISTIAN	20.05.2016	02
500001176917	D-4	NOTE IS ADDED	CESTRELLA	MARIAN	13.05.2016	01
ECM	LOC	SUMMARY OF MODIFICATIONS	EXECUTED	CHECKED	RELEASED	DATE VER
EXECUTED	CESTRELLA	THREE PHASE ODP ROLLED STEEL PREM. EFF. FRAME 56HZ IP21	10003274089			
CHECKED			000	02		
RELEASED	RTORRE					
REL DT	17.12.2014	WMX	HUEHUETOCA	INGENIERA DEL PRODUCTO	SHEET	1 / 1

3 HP 04 Poles 60Hz 413691747/0

UNCONTROLLED COPY
RELEASED
ZME A3



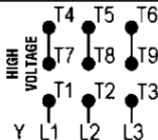
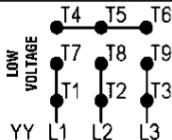
MADE IN MEXICO

MAT: 13089807

W01.T00IC0X0X


MODEL 003180T3E56Z-S

PH 3	Hz 60	HP 3.0
FR 56HZ		KW 2.2
DUTY CONT.		V 230/460
ALT 1000 m.a.s.l		A 7.94/3.97
INS CL F ΔT 80K		SFA 9.13/4.57
AMB 40°C	DES A	SF 1.15
ENCL ODP	CODE K	PF 0.80
		RPM 1735
		AVG. F.L. EFF. 86.9%
ALTERNATE RATING: 2.0HP 50Hz 190-220/380-415V SF1.15		
6.96-6.75/3.48-3.58A 1445RPM EFF 85.8% (IE3) IEC 60034-1		
Inverter duty motor For 60Hz use on VPWM 1000:1 VT, 5:1 CT		
DE 6205-ZZ	ODE 6202-ZZ	MOBIL POLYREX EM



T1-BLU T2-WHT
 T3-ORG T4-YEL
 T5-BLK T6-GRY
 T7-PNK T8-RED
 T9-RED BRK

INTERCHANGE ANY TWO LINE WIRES TO REVERSE THE ROTATION

 **WARNING:** Motor must be grounded in accordance with local and national electrical codes to prevent serious electrical shocks. Disconnect power source before servicing unit.



AVERTISSEMENT: Le moteur doit être mis à la terre conformément aux codes électriques locaux et nationaux afin d'éviter tout choc électrique grave. Déconnectez l'alimentation avant l'entretien de la machine.

