

# DATA SHEET



## Single Phase Induction Motor - Squirrel Cage

Customer :					
Product line : Rolled Steel Single-Phase		Product code : 12882457			
		Catalog # : 00158OT1B56-S			
Frame : 56H Output : 1.5 HP (1.1 kW) Poles : 4 Frequency : 60 Hz Rated voltage : 115/208-230 V Rated current : 13.0/7.52-6.49 A L. R. Amperes : 105/60.9-52.6 A LRC : 8.1x(Code K) No load current : 4.90/2.11-2.45 A Rated speed : 1740 rpm Slip : 3.33 % Rated torque : 4.53 ft.lb Locked rotor torque : 320 % Breakdown torque : 229 % Insulation class : F Service factor : 1.15 Moment of inertia (J) : 0.1362 sq.ft.lb Design : L		Locked rotor time : 39s (cold) 22s (hot) Temperature rise : 80 K Duty cycle : Cont.(S1) Ambient temperature : -20°C to +40°C Altitude : 1000 m.a.s.l. Cooling method : IC01 - ODP Mounting : F-1 Rotation <sup>1</sup> : Both (CW and CCW) Noise level <sup>2</sup> : 52.0 dB(A) Starting method : Direct On Line Approx. weight <sup>3</sup> : 45.2 lb			
Output	25%	50%	75%	100%	
Efficiency (%)	79.4	80.5	83.0	83.8	
Power Factor	0.51	0.78	0.85	0.88	
Foundation loads					
Max. traction : 79 lb					
Max. compression : 125 lb					
		<u>Drive end</u>	<u>Non drive end</u>		
Bearing type	:	6204 ZZ	6202 ZZ		
Sealing	:	Without Bearing Seal	Without Bearing Seal		
Lubrication interval	:	-	-		
Lubricant amount	:	-	-		
Lubricant type	:	Mobil Polyrex EM			
Notes					
This revision replaces and cancel the previous one, which must be eliminated. (1) Looking the motor from the shaft end. (2) Measured at 1m and with tolerance of +3dB(A). (3) Approximate weight subject to changes after manufacturing process. (4) At 100% of full load.			These are average values based on tests with sinusoidal power supply, subject to the tolerances stipulated in NEMA MG-1.		
Rev.	Changes Summary		Performed	Checked	Date
Performed by					
Checked by					
Date	06/11/2023			Page	Revision
				1 / 1	

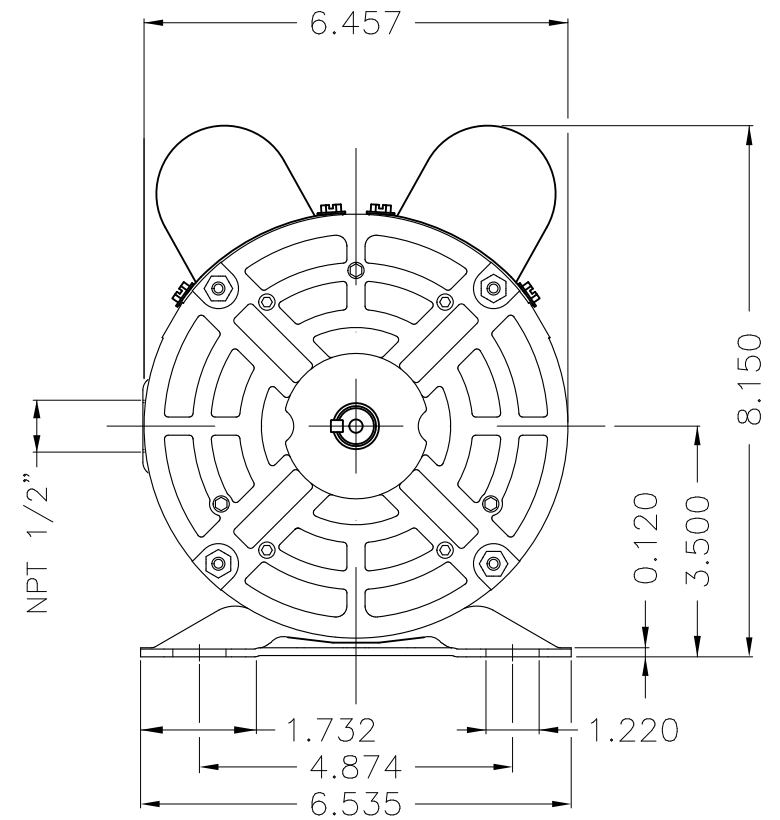
A

B

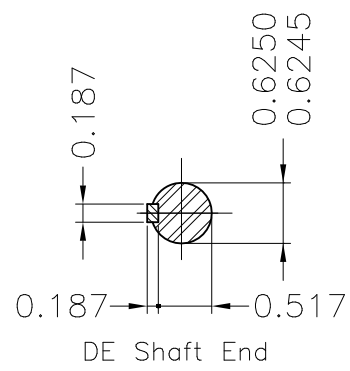
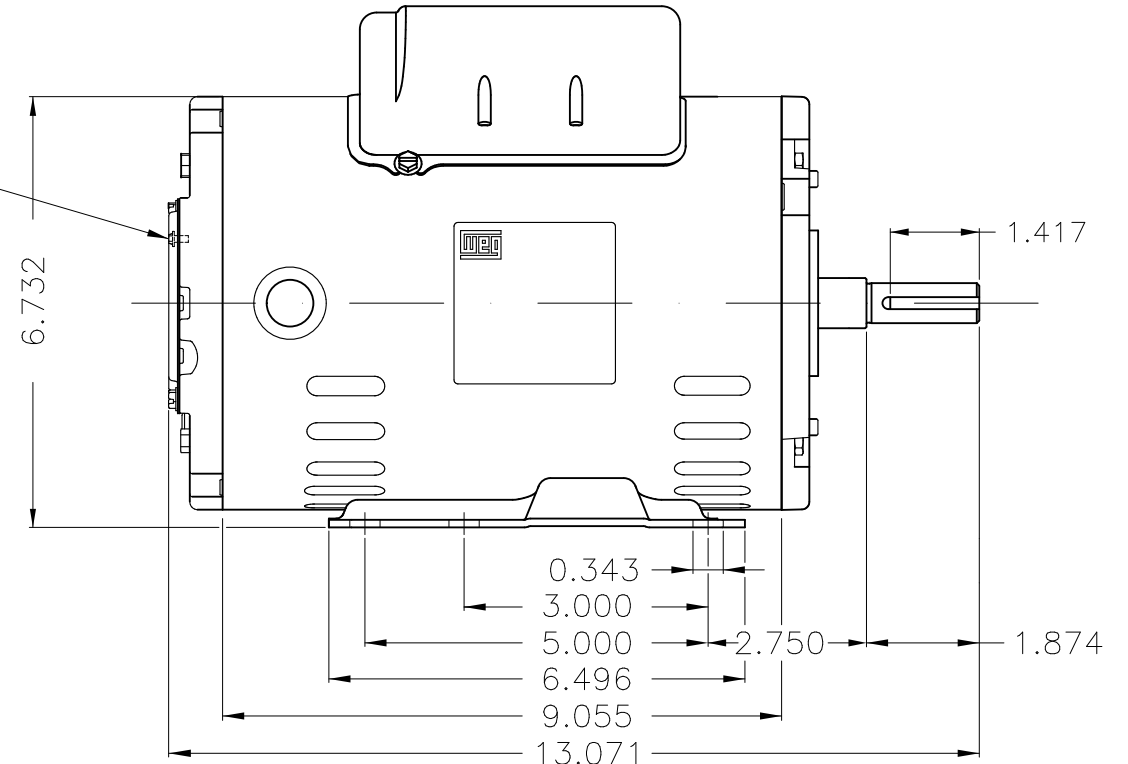
C

D


E



Grounding



Dimensions in inches

Mounting F-1/B3R(D)						
					USERADMIN	00
ECM	LOC	SUMMARY OF MODIFICATIONS		EXECUTED	CHECKED	RELEASED
EXECUTED	USERADMIN	SINGLE PH. MOTOR ROLLED STEEL PREM. EFF.		PREVIEW		
CHECKED		FRAME 56H IP21 ODP		WDD 00		
RELEASED				SHEET 1 / 1		
REL. DATE		WMO	Jaragua do Sul	Product Engineering		

1.5 HP 04 Poles 60 Hz

A



MADE IN BRAZIL

**MAT: 12882457**

**W01.M00IC0X0X**

**MODEL 00158OT1B56-S**

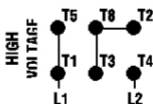
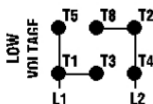
**06NOV2023 B/N:**

PH 1	Hz 60	HP 1.5
FR 56H		kW 1.1
DUTY CONT.		V 115/230
ALT 1000 m.a.s.l		A 13.0/6.49
INS CL F ΔT 80K		SFA 15.2/7.60
AMB 40°C	DES L	SF 1.15
ENCL ODP	CODE K	PF 0.88
		RPM 1740
		AVG. F.L. EFF. 83.8%

**Electric Motor**

DE 6204-ZZ	ODE 6202-ZZ	MOBIL POLYREX EM
------------	-------------	------------------

**REVERSE ROTATION INVERT T5 BY T8**



- T1 - BLU
- T2 - WHT
- T3 - ORG
- T4 - YEL
- T5 - BLK
- T8 - RED



**WARNING:** Motor must be grounded in accordance with local and national electrical codes to prevent serious electrical shocks. Disconnect power source before servicing unit.



**AVERTISSEMENT:** Le moteur doit être mis à la terre conformément aux codes électriques locaux et nationaux afin d'éviter tout choc électrique grave. Déconnectez l'alimentation avant l'entretien de la machine.