

DATA SHEET

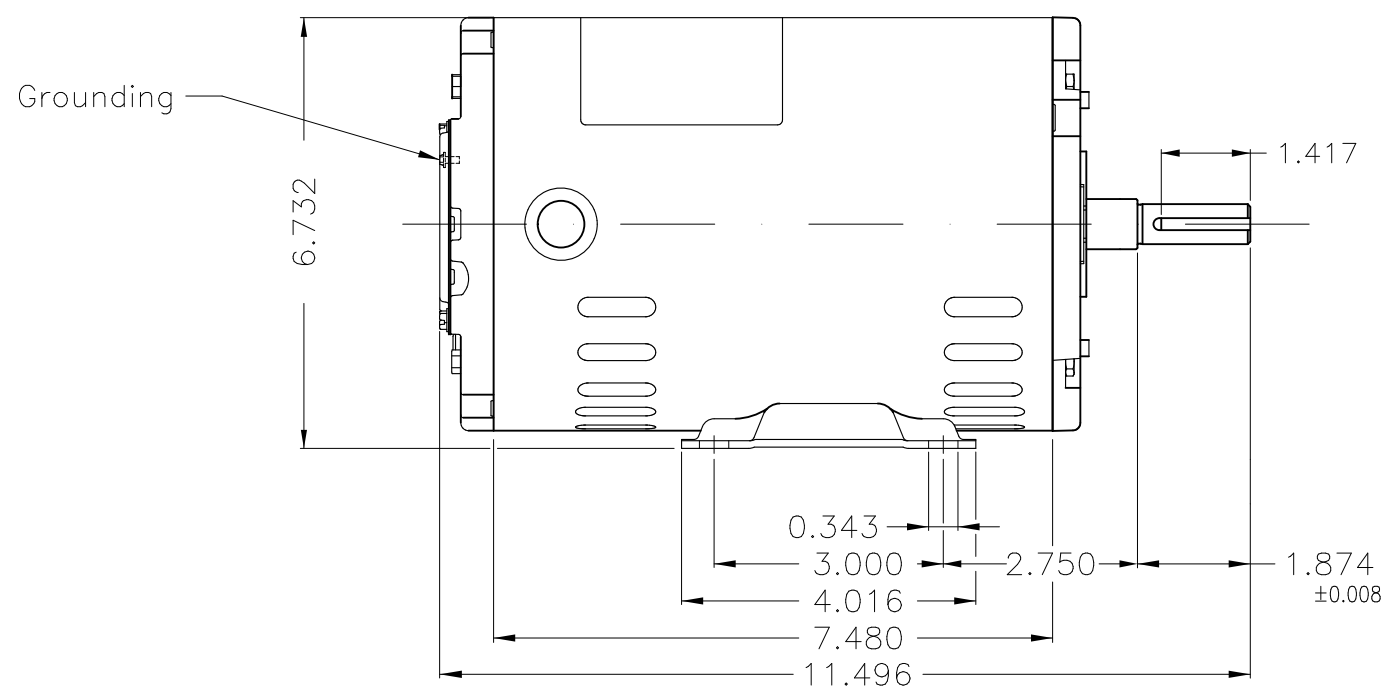
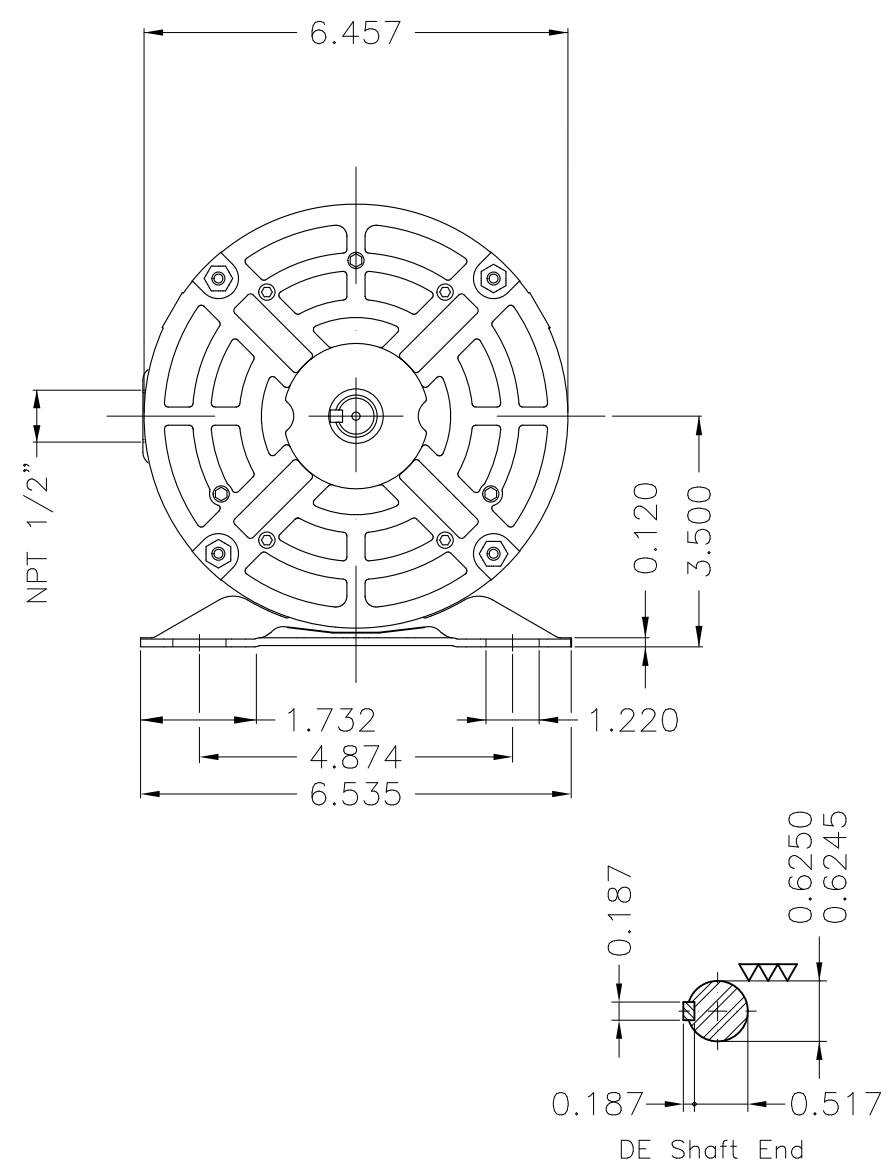


Three Phase Induction Motor - Squirrel Cage

Customer :					
Product line : Rolled Steel Premium Efficiency Three-Phase		Product code : 12809660			
		Catalog # : 00118OT3E56-S			
Frame : 56 Output : 1 HP (0.75 kW) Poles : 4 Frequency : 60 Hz Rated voltage : 230/460 V Rated current : 3.14/1.57 A L. R. Amperes : 23.9/11.9 A LRC : 7.6x(Code L) No load current : 2.20/1.10 A Rated speed : 1760 rpm Slip : 2.22 % Rated torque : 2.98 ft.lb Locked rotor torque : 280 % Breakdown torque : 320 % Insulation class : F Service factor : 1.15 Moment of inertia (J) : 0.0842 sq.ft.lb Design : A		Locked rotor time : 30s (cold) 17s (hot) Temperature rise : 80 K Duty cycle : Cont.(S1) Ambient temperature : -20°C to +40°C Altitude : 1000 m.a.s.l. Cooling method : IC01 - ODP Mounting : F-1 Rotation ¹ : Both (CW and CCW) Noise level ² : 52.0 dB(A) Starting method : Direct On Line Approx. weight ³ : 27.1 lb			
Output	25%	50%	75%	100%	
Efficiency (%)	77.3	78.5	82.5	83.5	
Power Factor	0.27	0.49	0.63	0.72	
Foundation loads					
Max. traction : 93 lb					
Max. compression : 120 lb					
Bearing type :		<u>Drive end</u>	<u>Non drive end</u>		
Sealing :		6204 ZZ	6202 ZZ		
Lubrication interval :		Without Bearing Seal			
Lubricant amount :		-			
Lubricant type :		Mobil Polyrex EM			
Notes USABLE @208V 3.47A SF 1.00 SFA 3.47A					
This revision replaces and cancel the previous one, which must be eliminated. (1) Looking the motor from the shaft end. (2) Measured at 1m and with tolerance of +3dB(A). (3) Approximate weight subject to changes after manufacturing process. (4) At 100% of full load.			These are average values based on tests with sinusoidal power supply, subject to the tolerances stipulated in NEMA MG-1.		
Rev.	Changes Summary		Performed	Checked	Date
Performed by					
Checked by					
Date	06/11/2023			Page	Revision
				1 / 1	

1 2 3 4 5 6

A
B
C
D
E



Without coating									
Mounting F-1/B3R(D)									
					USERADMIN	00			
ECM	LOC	SUMMARY OF MODIFICATIONS			EXECUTED	CHECKED	RELEASED	DATE	VER
EXECUTED	USERADMIN	THREE PH. MOTOR ROLLED STEEL PREM. EFF.				PREVIEW			
CHECKED		FRAME 56 IP21 ODP				WDD	00		
RELEASED						SHEET	1 / 1		
REL. DATE		WMO	Jaragua do Sul	Product Engineering					

1 HP 04 Poles 60 Hz

A



MADE IN MEXICO

MAT: 12809660

W01.T00IC0X0X

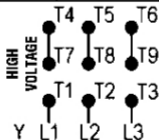
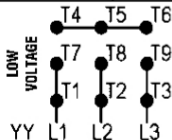
MODEL 001180T3E56-S

PH 3	Hz 60	HP 1.0
FR 56		KW 0.75
DUTY CONT.		V 230/460
ALT 1000 m.a.s.l		A 3.14/1.57
INS CL F ΔT 80K		SFA 3.61/1.81
AMB 40°C	DES A	SF 1.15
ENCL ODP	CODE L	PF 0.72
		RPM 1760
		AVG. F.L. EFF. 83.5%

ALTERNATE RATING: 1.0HP 50Hz 190-220/380-415V SF1.15
 3.54-3.34/1.77-1.77A 1440RPM EFF 80.6% (IE2) IEC 60034-1

Inverter duty motor For 60Hz use on VPWM 1000:1 VT, 5:1 CT

DE 6204-ZZ	ODE 6202-ZZ	MOBIL POLYREX EM	
------------	-------------	------------------	--



- T1-BLU T2-WHT
- T3-ORG T4-YEL
- T5-BLK T6-GRY
- T7-PNK T8-RED
- T9-RED BRK

INTERCHANGE ANY TWO LINE WIRES TO REVERSE THE ROTATION

WARNING: Motor must be grounded in accordance with local and national electrical codes to prevent serious electrical shocks. Disconnect power source before servicing unit.



AVERTISSEMENT: Le moteur doit être mis à la terre conformément aux codes électriques locaux et nationaux afin d'éviter tout choc électrique grave. Déconnectez l'alimentation avant l'entretien de la machine.