

# DATA SHEET



## Single Phase Induction Motor - Squirrel Cage

Customer : \_\_\_\_\_

Product line : Rolled Steel Single-Phase      Product code : 12882335  
 Catalog # : 00118OT1B56-S

Frame : 56	Locked rotor time : 27s (cold) 15s (hot)
Output : 1 HP (0.75 kW)	Temperature rise : 80 K
Poles : 4	Duty cycle : Cont.(S1)
Frequency : 60 Hz	Ambient temperature : -20°C to +40°C
Rated voltage : 115/208-230 V	Altitude : 1000 m.a.s.l.
Rated current : 9.00/4.98-4.50 A	Cooling method : IC01 - ODP
L. R. Amperes : 75.6/41.8-37.8 A	Mounting : F-1
LRC : 8.4x(Code K)	Rotation <sup>1</sup> : Both (CW and CCW)
No load current : 3.40/1.47-1.70 A	Noise level <sup>2</sup> : 52.0 dB(A)
Rated speed : 1750 rpm	Starting method : Direct On Line
Slip : 2.78 %	Approx. weight <sup>3</sup> : 35.9 lb
Rated torque : 3.00 ft.lb	
Locked rotor torque : 260 %	
Breakdown torque : 250 %	
Insulation class : F	
Service factor : 1.15	
Moment of inertia (J) : 0.1232 sq.ft.lb	
Design : L	

Output	25%	50%	75%	100%	Foundation loads
Efficiency (%)	72.6	75.0	80.0	82.6	Max. traction : 55 lb
Power Factor	0.50	0.75	0.83	0.87	Max. compression : 91 lb

	<u>Drive end</u>	<u>Non drive end</u>
Bearing type :	6204 ZZ	6202 ZZ
Sealing :	Without Bearing Seal	Without Bearing Seal
Lubrication interval :	-	-
Lubricant amount :	-	-
Lubricant type :	Mobil Polyrex EM	

Notes

This revision replaces and cancel the previous one, which must be eliminated.  
 (1) Looking the motor from the shaft end.  
 (2) Measured at 1m and with tolerance of +3dB(A).  
 (3) Approximate weight subject to changes after manufacturing process.  
 (4) At 100% of full load.

These are average values based on tests with sinusoidal power supply, subject to the tolerances stipulated in NEMA MG-1.

Rev.	Changes Summary	Performed	Checked	Date
Performed by			Page	Revision
Checked by			1 / 1	
Date	06/11/2023			

1 2 3 4 5 6

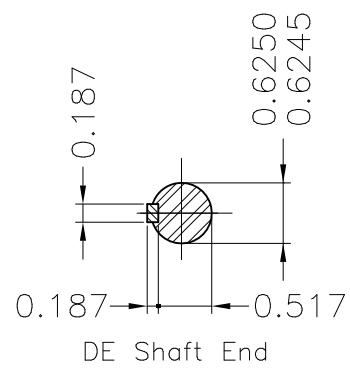
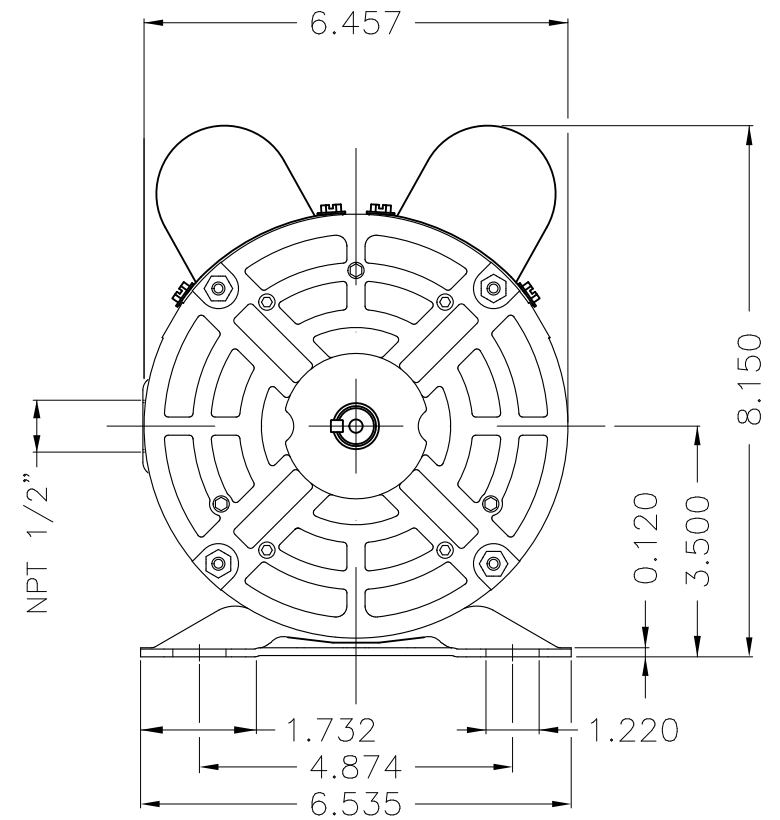
A

B

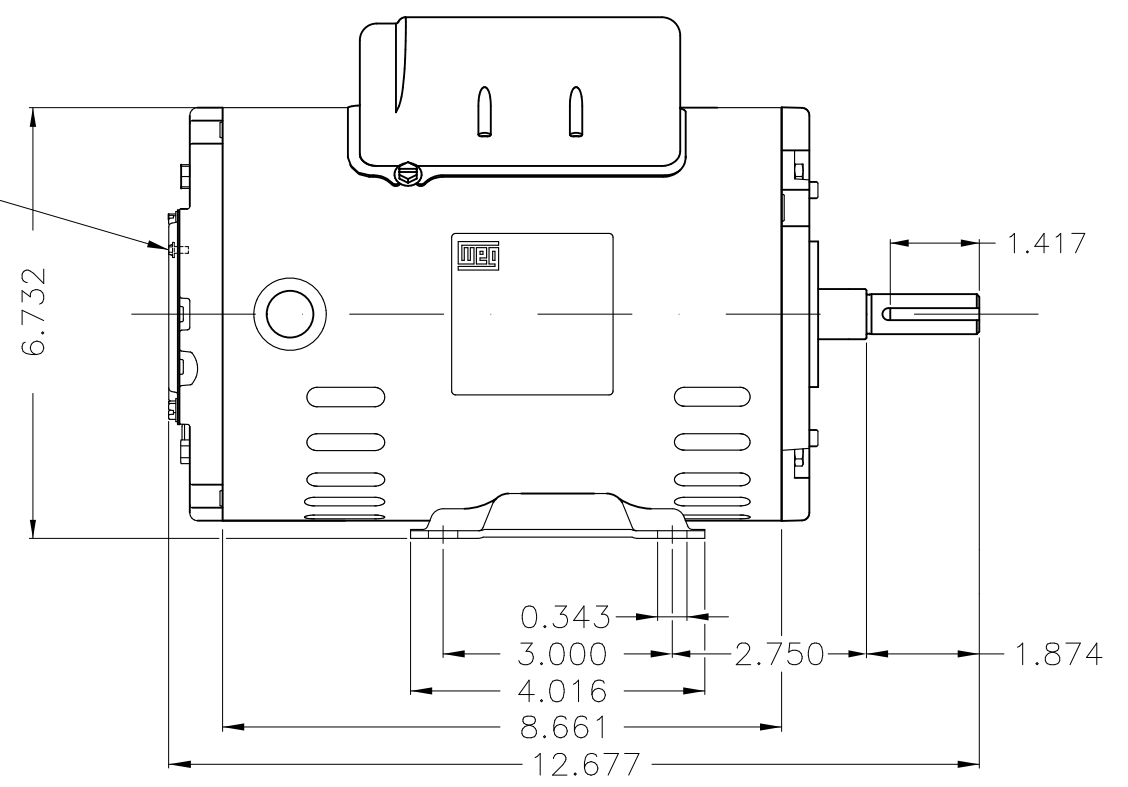
C

D

E



Grounding



Mounting F-1/B3R(D)						
ECM	LOC	SUMMARY OF MODIFICATIONS			EXECUTED	VER
EXECUTED	USERADMIN	SINGLE PH. MOTOR ROLLED STEEL PREM. EFF.			EXECUTED	00
CHECKED		FRAME 56 IP21 ODP			CHECKED	
RELEASED					RELEASED	
REL. DATE		WMO	Jaragua do Sul	Product Engineering	PREVIEW	
					WDD	00
					SHEET	1 / 1

1 HP 04 Poles 60 Hz

A





MADE IN MEXICO

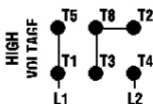
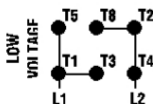
**MAT: 12882335**

**W01.M00IC0X0X**

**MODEL 001180T1B56-S**

PH 1	Hz 60	HP 1.0
FR 56		KW 0.75
DUTY CONT.		V 115/230
ALT 1000 m.a.s.l		A 9.00/4.50
INS CL F ΔT 80K		SFA -
AMB 40°C	DES L	SF 1.15
ENCL ODP	CODE K	PF 0.87
		RPM 1750
		AVG. F.L. EFF. 82.6%
<b>Electric Motor</b>		
DE 6204-ZZ	ODE 6202-ZZ	MOBIL POLYREX EM

**REVERSE ROTATION INVERT T5 BY T8**



T1 - BLU  
 T2 - WHT  
 T3 - ORG  
 T4 - YEL  
 T5 - BLK  
 T8 - RED



**WARNING:** Motor must be grounded in accordance with local and national electrical codes to prevent serious electrical shocks. Disconnect power source before servicing unit.



**AVERTISSEMENT:** Le moteur doit être mis à la terre conformément aux codes électriques locaux et nationaux afin d'éviter tout choc électrique grave. Déconnectez l'alimentation avant l'entretien de la machine.