

DATA SHEET



Single Phase Induction Motor - Squirrel Cage

Customer :					
Product line : Rolled Steel Single-Phase		Product code : 12884083			
		Catalog # : .5018ES1BW56C-S			
Frame : W56C Output : 0.5 HP (0.37 kW) Poles : 4 Frequency : 60 Hz Rated voltage : 115/208-230 V Rated current : 8.00/4.42-4.00 A L. R. Amperes : 45.6/25.2-22.8 A LRC : 5.7x(Code M) No load current : 6.60/2.85-3.30 A Rated speed : 1730 rpm Slip : 3.89 % Rated torque : 1.52 ft.lb Locked rotor torque : 320 % Breakdown torque : 270 % Insulation class : F Service factor : 1.15 Moment of inertia (J) : 0.0479 sq.ft.lb Design : N		Locked rotor time : 18s (cold) 10s (hot) Temperature rise : 80 K Duty cycle : Cont.(S1) Ambient temperature : -20°C to +40°C Altitude : 1000 m.a.s.l. Protection degree : IP55 Cooling method : IC411 - TEFC Mounting : F-1 Rotation ¹ : Both (CW and CCW) Noise level ² : 52.0 dB(A) Starting method : Direct On Line Approx. weight ³ : 21.5 lb			
Output	25%	50%	75%	100%	
Efficiency (%)	48.5	52.0	59.0	64.0	
Power Factor	0.25	0.44	0.54	0.63	
Foundation loads					
Max. traction : 29 lb					
Max. compression : 51 lb					
		<u>Drive end</u>	<u>Non drive end</u>		
Bearing type	:	6203 ZZ	6202 ZZ		
Sealing	:	V'Ring	Without Bearing Seal		
Lubrication interval	:	-	-		
Lubricant amount	:	-	-		
Lubricant type	:	Mobil Polyrex EM			
Notes					
This revision replaces and cancel the previous one, which must be eliminated. (1) Looking the motor from the shaft end. (2) Measured at 1m and with tolerance of +3dB(A). (3) Approximate weight subject to changes after manufacturing process. (4) At 100% of full load.			These are average values based on tests with sinusoidal power supply, subject to the tolerances stipulated in NEMA MG-1.		
Rev.	Changes Summary		Performed	Checked	Date
Performed by					
Checked by					
Date	06/11/2023			Page	Revision
				1 / 1	

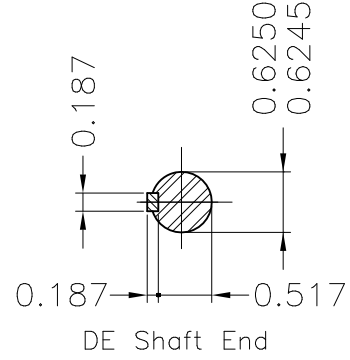
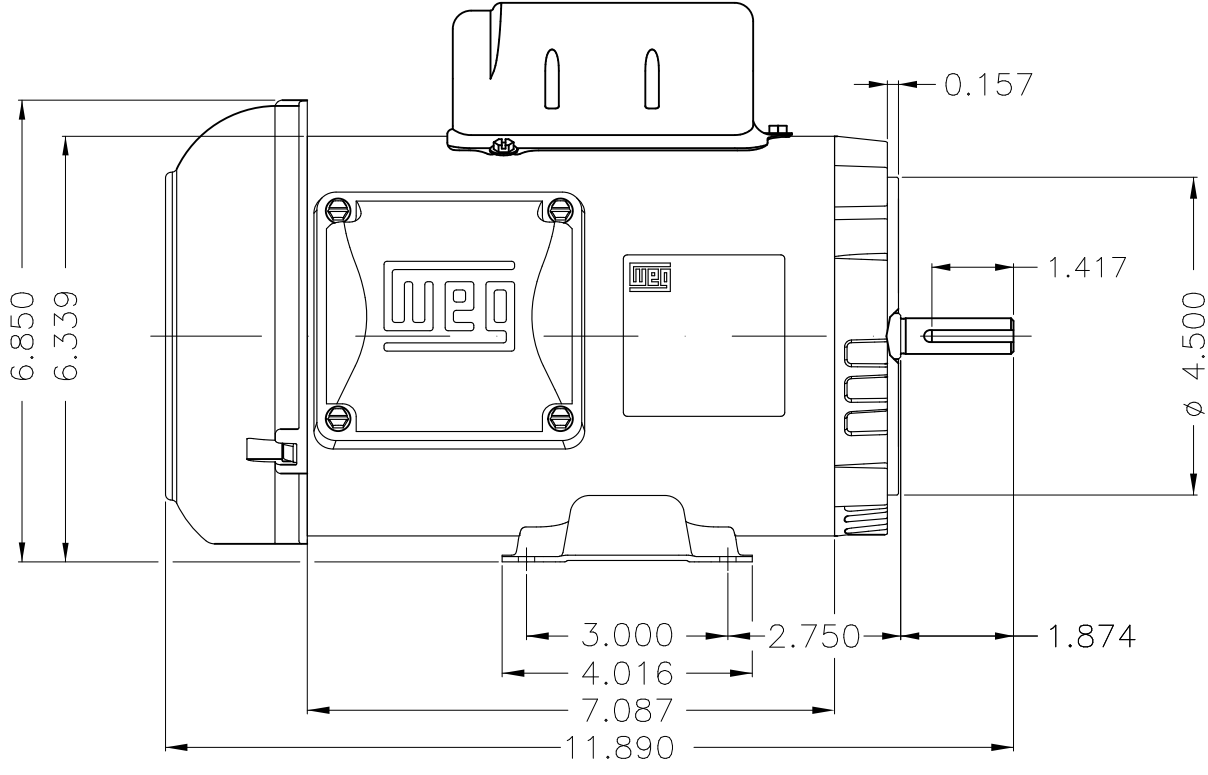
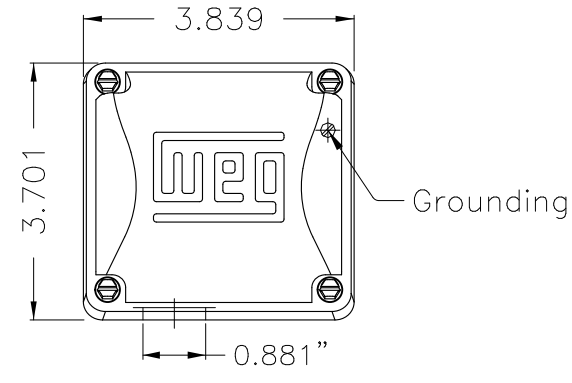
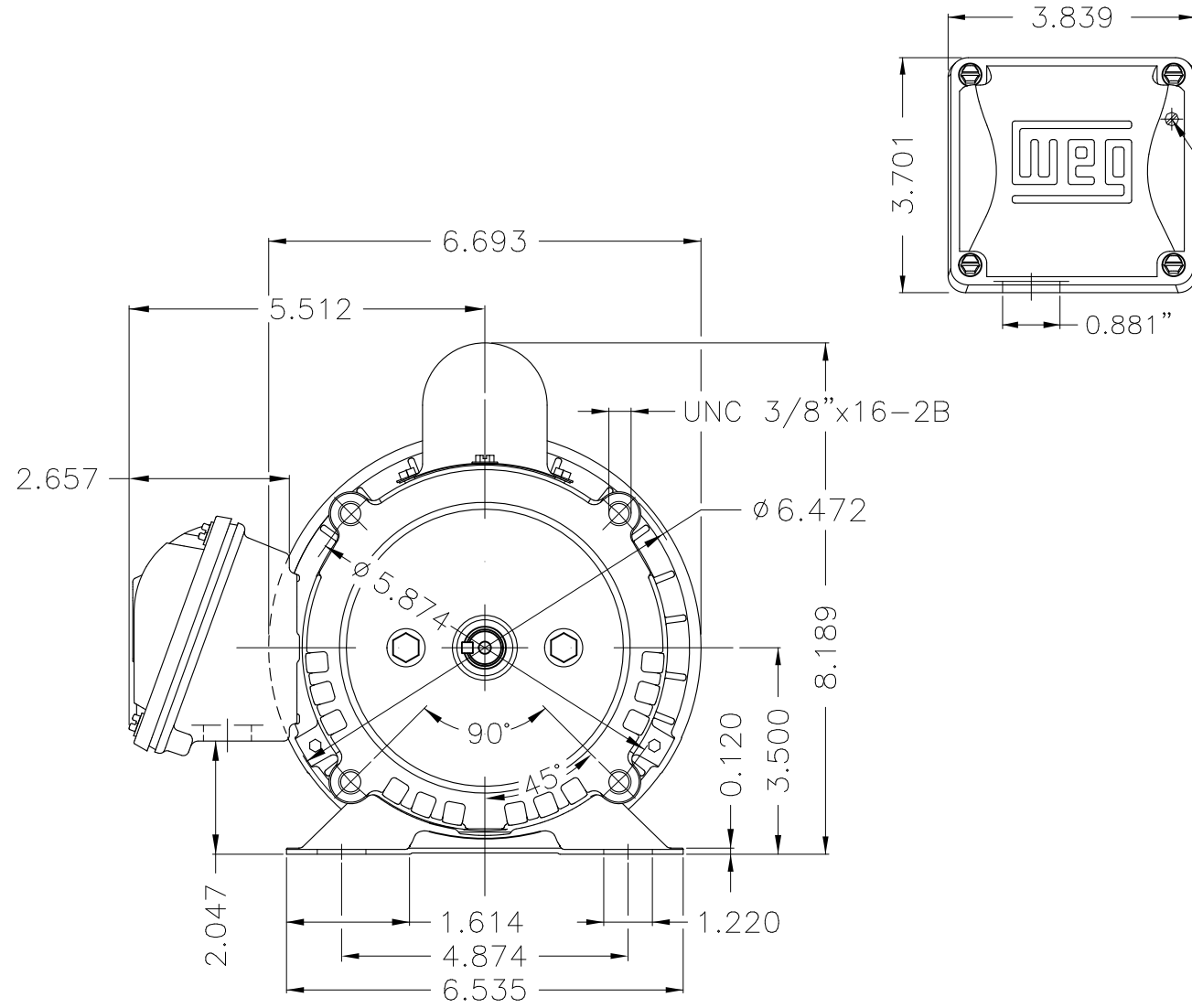
A

B

C

D

E



Color Munsell N 1 matte black
 Painting plan 207N
 Mounting F-1/B34R(D)

ECM	LOC	SUMMARY OF MODIFICATIONS	EXECUTED	CHECKED	RELEASED	DATE	VER
EXECUTED	USERADMIN	SINGLE PH. MOTOR ROLLED STEEL					
CHECKED		FRAME W56C IP55 TEFC					
RELEASED							
REL. DATE	WMO	Jaragua do Sul	Product Engineering				

PREVIEW

WDD | 00



0.5 HP 04 Poles 60 Hz



MADE IN MEXICO
12884083

MODEL .5018ES1BW56C-S
W01.ME0IC0X0X

PH1	Hz 60	FR W56C	ALT 1000 m.a.s.l	ENCL TEFC	IP55
V	115/230		A	8.00/4.00	
HP	0.50		kW	0.37	
SF	1.15		SFA	-	
RPM	1730		PF	0.63	
AMB	40°C		INS CL F ΔT 80K	NEMA	
DUTY CONT.			DES N CODE M	NOM.EFF. 64.0%	

Electric Motor

DE 8203-ZZ
ODE 8202-ZZ



MOBIL POLYREX EM



WARNING: Motor must be grounded in accordance with local and national electrical codes to prevent serious electrical shocks. Disconnect power source before servicing unit.

AVERTISSEMENT: Le moteur doit être mis à la terre conformément aux codes électriques locaux nationaux afin d'éviter tout choc électrique grave. Déconnectez l'alimentation avant l'entretien de la machine.

REVERSE ROTATION INVERT T5 AND T8

