

DATA SHEET



Three Phase Induction Motor - Squirrel Cage

Customer : _____

Product line : W22 NEMA Premium Efficiency Three-Phase
 Product code : 11438008
 Catalog # : 02018ET3E256T-W22

Frame : 254/6T	Locked rotor time : 54s (cold) 30s (hot)
Output : 20 HP (15 kW)	Temperature rise : 80 K
Poles : 4	Duty cycle : Cont.(S1)
Frequency : 60 Hz	Ambient temperature : -20°C to +40°C
Rated voltage : 230/460 V	Altitude : 1000 m.a.s.l.
Rated current : 48.2/24.1 A	Protection degree : IP55
L. R. Amperes : 333/166 A	Cooling method : IC411 - TEFC
LRC : 6.9x(Code H)	Mounting : F-1
No load current : 19.2/9.60 A	Rotation ¹ : Both (CW and CCW)
Rated speed : 1770 rpm	Noise level ² : 64.0 dB(A)
Slip : 1.67 %	Starting method : Direct On Line
Rated torque : 59.3 ft.lb	Approx. weight ³ : 339 lb
Locked rotor torque : 240 %	
Breakdown torque : 260 %	
Insulation class : F	
Service factor : 1.25	
Moment of inertia (J) : 3.10 sq.ft.lb	
Design : B	

Output	50%	75%	100%	Foundation loads
Efficiency (%)	91.7	92.4	93.0	Max. traction : 725 lb
Power Factor	0.68	0.79	0.84	Max. compression : 1063 lb

Losses at normative operating points (speed;torque), in percentage of rated output power

P1 (0,9;1,0)	P2 (0,5;1,0)	P3 (0,25;1,0)	P4 (0,9;0,5)	P5 (0,5;0,5)	P6 (0,5;0,25)	P7 (0,25;0,25)
7.5	6.4	5.8	3.6	2.5	1.6	1.1

	<u>Drive end</u>	<u>Non drive end</u>
Bearing type :	6309 C3	6209 C3
Sealing :	V'Ring	V'Ring
Lubrication interval :	20000 h	20000 h
Lubricant amount :	13 g	9 g
Lubricant type :	Mobil Polyrex EM	

Notes

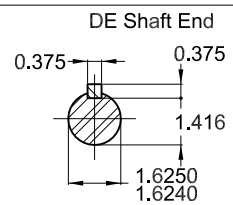
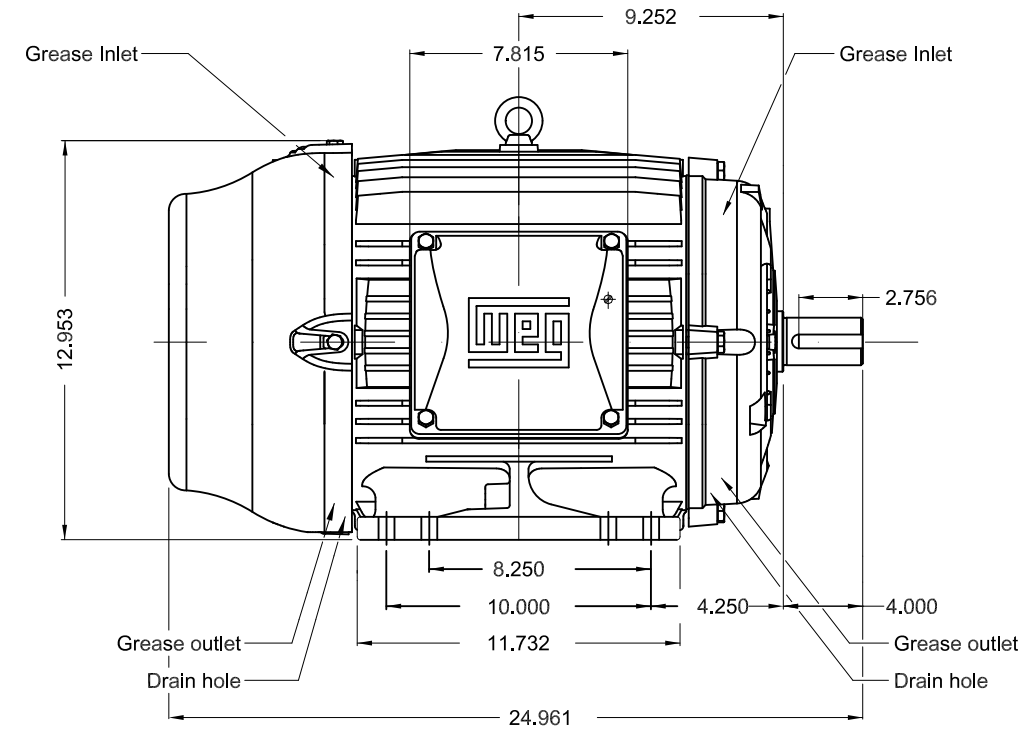
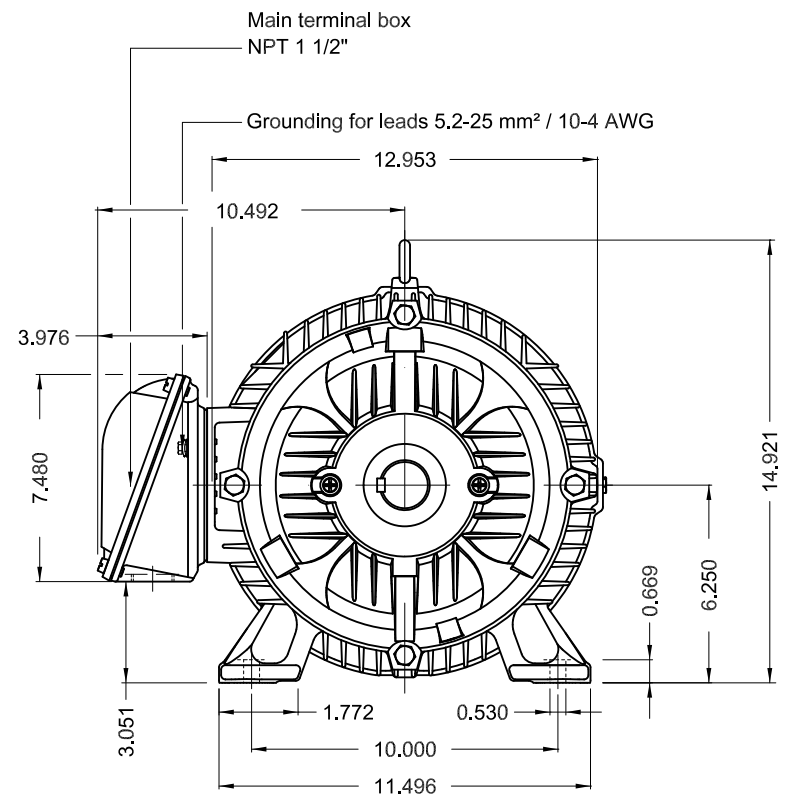
USABLE @208V 53.3A SF 1.15 SFA 61.3A

This revision replaces and cancel the previous one, which must be eliminated.

- (1) Looking the motor from the shaft end.
- (2) Measured at 1m and with tolerance of +3dB(A).
- (3) Approximate weight subject to changes after manufacturing process.
- (4) At 100% of full load.

These are average values based on tests with sinusoidal power supply, subject to the tolerances stipulated in NEMA MG-1.

Rev.	Changes Summary	Performed	Checked	Date
Performed by			Page	Revision
Checked by			1 / 1	
Date	07/11/2023			



Without vertical jackscrews
 Color RAL 5009
 Painting plan 203A
 Mounting B3R(D)

20 HP 04 Poles 60 Hz A

						USERADMIN								00	
ECM	LOC	SUMMARY OF MODIFICATIONS				EXECUTED	CHECKED	RELEASED	DATE	VER					
EXECUTED	USERADMIN	THREE PH. MOTOR W22 NEMA PREM. EFF.				EXECUTED		CHECKED		RELEASED		DATE		VER	
CHECKED		FRAME 254/6T IP55 TEFC				EXECUTED		CHECKED		RELEASED		DATE		VER	
RELEASED						EXECUTED		CHECKED		RELEASED		DATE		VER	
REL. DATE		WMO Jaragua do Sul		Product Engineering		EXECUTED		CHECKED		RELEASED		DATE		VER	

PREVIEW

WDD 00



SHEET 1 / 1



FOR SAFE AREA
Mod. TE1BFOXON
CC029A



For use on 60Hz

Class I, Div 2, Gr A, B, C and D - T3

Class I, Zone 2, IIC - T3

Class II, Div 2, Gr F and G - T4

For use on PWM: Gr. A, B, C, D and F,
VT 1000:1, CT 20:1, 1.00SF - T3A

MODEL 02018ET3E256T-W22

Inverter Duty Motor
Severe Duty

PH3 60Hz Fr. 254/6T 1000m.a.s.l. IP55 TEFC 339lb

V 230/460

A 48.2/24.1

HP 20

kW 15

SF 1.25

SFA 60.3/30.1

RPM 1770

PF 0.84

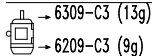
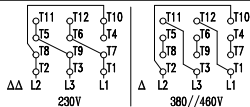
AMB 40°C

INS cl. F DT80K NEMA NOM EFF 93.0%

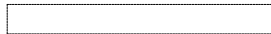
DUTY CONT.

DES B Code H

20HP 15kW 50Hz 380V 29.4A 1455RPM SF 1.00 EFF 90.2% (IE1)



MOBIL POLYREX EM (20000h)



MADE IN MEXICO
11438008