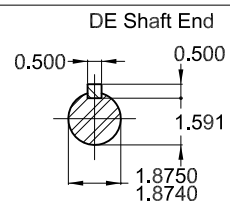
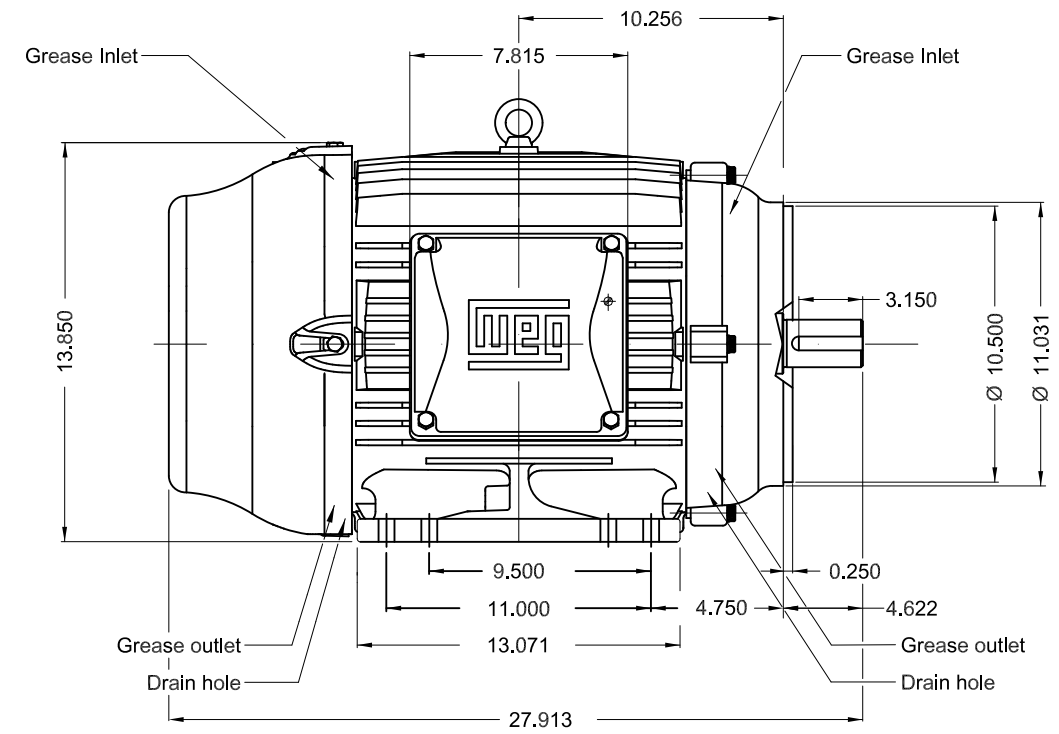
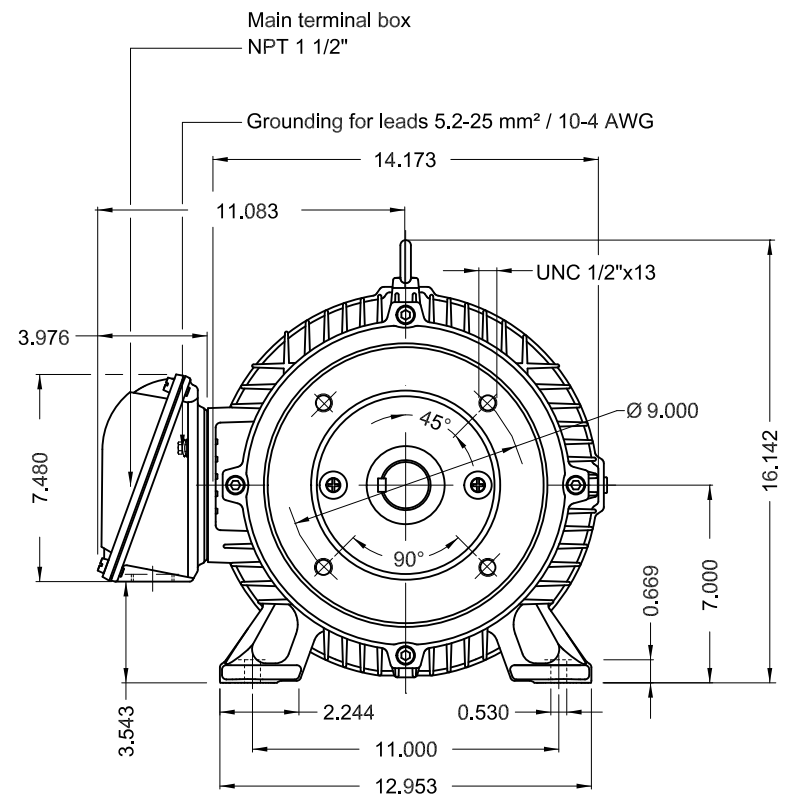


DATA SHEET



Three Phase Induction Motor - Squirrel Cage

Customer :						
Product line : W22 NEMA Premium Efficiency Three-Phase			Product code : 12447067		Catalog # : 02518ET3E284TC-W22	
Frame : 284/6TC Output : 25 HP (18.5 kW) Poles : 4 Frequency : 60 Hz Rated voltage : 230/460 V Rated current : 59.0/29.5 A L. R. Amperes : 366/183 A LRC : 6.2x(Code G) No load current : 22.0/11.0 A Rated speed : 1770 rpm Slip : 1.67 % Rated torque : 74.2 ft.lb Locked rotor torque : 240 % Breakdown torque : 270 % Insulation class : F Service factor : 1.25 Moment of inertia (J) : 5.11 sq.ft.lb Design : B			Locked rotor time : 43s (cold) 24s (hot) Temperature rise : 80 K Duty cycle : Cont.(S1) Ambient temperature : -20°C to +40°C Altitude : 1000 m.a.s.l. Protection degree : IP55 Cooling method : IC411 - TEFC Mounting : F-1 Rotation ¹ : Both (CW and CCW) Noise level ² : 63.0 dB(A) Starting method : Direct On Line Approx. weight ³ : 406 lb			
Output 50% 75% 100%			Foundation loads			
Efficiency (%) 92.4 93.0 93.6 Power Factor 0.70 0.80 0.84			Max. traction : 813 lb Max. compression : 1219 lb			
Losses at normative operating points (speed;torque), in percentage of rated output power						
P1 (0,9;1,0)	P2 (0,5;1,0)	P3 (0,25;1,0)	P4 (0,9;0,5)	P5 (0,5;0,5)	P6 (0,5;0,25)	P7 (0,25;0,25)
6.8	5.8	5.3	3.1	2.2	1.4	1.0
			<u>Drive end</u>		<u>Non drive end</u>	
Bearing type	:	6311 C3		6211 C3		
Sealing	:	V'Ring		V'Ring		
Lubrication interval	:	20000 h		20000 h		
Lubricant amount	:	18 g		11 g		
Lubricant type	:	Mobil Polyrex EM				
Notes USABLE @208V 65.2A SF 1.15 SFA 75.0A						
This revision replaces and cancel the previous one, which must be eliminated. (1) Looking the motor from the shaft end. (2) Measured at 1m and with tolerance of +3dB(A). (3) Approximate weight subject to changes after manufacturing process. (4) At 100% of full load.				These are average values based on tests with sinusoidal power supply, subject to the tolerances stipulated in NEMA MG-1.		
Rev.	Changes Summary			Performed	Checked	Date
Performed by						
Checked by						
Date	03/11/2023				Page	Revision
					1 / 1	



Without vertical jackscrews
 Color RAL 5009
 Painting plan 203A
 Mounting B34R(D)

25 HP 04 Poles 60 Hz

ECM		LOC	SUMMARY OF MODIFICATIONS			USERADMIN					00
EXECUTED	USERADMIN			THREE PH. MOTOR W22 NEMA PREM. EFF.			PREVIEW				
CHECKED				FRAME 284/6TC IP55 TEFC			WDD 00				
RELEASED							SHEET 1 / 1				
REL. DATE		WMO Jaragua do Sul		Product Engineering							



*Inverter Duty Motor
Severe Duty*



FOR SAFE AREA
MOD.TE1BFOXON



For 60Hz: Class I, Div 2, Gr. A, B, C and D - T3
Class I, Zone 2, IIC - T3

Class II, Div 2, Gr. F and G - T4

For 60Hz use on PWM, Gr. A, B, C, D and F,
VT 1000:1, CT 20:1, 1.0SF, T3A

MODEL 02518ET3E284TC-W22
MADE IN MEXICO
12447067

PH 3 | FR 284/6TC | HP(kW) 25.0(18.5) | Hz 60

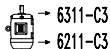
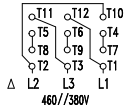
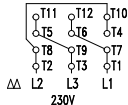
V 230/460 | A 59.0/29.5 | RPM 1765 | DES B

NEMA NOM EFF 93.6 % | INS. CL. F ΔT 80 K | IP55

ENCL TEFC | DUTY CONT. | AMB. 40°C

CODE G | PF 0.84 | SF 1.25 | SFA 73.8/36.9

25HP 18.5kW 50Hz 380V 35.6A 1445RPM SF1.00 EFF 91.7% (IE2)



→ 6311-C3
→ 6211-C3

MOBIL POLYREX EM
18 g 20000 h

ALT 1000 m.a.s.l. | 408 Lbs