

# DPR

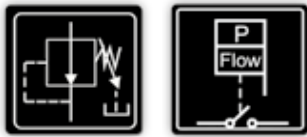
Digital Pressure Regulator

Digital pump driver with adjustable outlet and starting pressure. Constant outlet pressure.

**DPR** is a compact device for automatic control and protection of electric pumps up to 2,2 kW (3 HP), multi-voltage (110-230 V) and equipped with an innovative outlet pressure reducing/regulating system.

It also includes a digital display with instantaneous indication of current consumption and outlet pressure since it houses current and pressure transducers inside.

Therefore, in addition to the typical characteristics of traditional electronic pump controllers: integrated non-return valve, accumulation diaphragm, pressure gauge, dry-running protection, automatic reset, ... it allows to adjust and stabilize the outlet pressure, avoiding overloads, water hammer and, ultimately, improving end user comfort.



DPR

## OPERATING CHARACTERISTICS

- Power relay to manage electric pumps up to 2,2 kW (3 HP).
- Multi-voltage power supply: 110-230 V.
- Manual regulation of the constant outlet pressure with integrated adjusting tool.
- Outlet pressure indicator with pointer.
- Digital adjustment of the starting pressure.
- Digital pressure gauge (bar and psi).
- Inner pressure transmitter
- Inner flow sensor.
- Inner current sensor with instantaneous digital reading.
- **ART function** (Automatic Reset Test). If the device has been stopped due to the action of the safety system against dry operation, the ART tries to connect the pump, with a program-med periodicity because the water supply could have been restored.
- **APR function** (Anti-blocking Periodic Routine).
- **Flooding** protection system.
- **Stand-by mode**.
- Control and protection systems against: overcurrents, dry run operation, overpressure, flooding and rotor blockage.-
- Control panel includes 3 digits display.
- **Register operation data**: controller operating hours, pump operating hours, number of operating cycles, number of connections to the power supply.
- **Alarm counters**.
- Inlet and outlet: NPT 1"



REGISTERED  
DESIGN

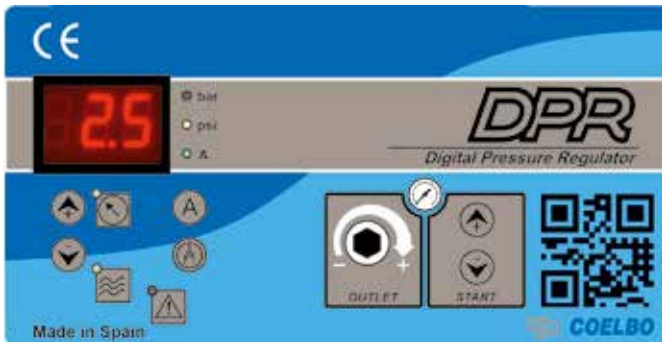


Low Voltage Directive 2014/35/EC  
Electromagnetic Compatibility 2014/30/EC  
RoHS 2011/65/EC + 2015/863/EC

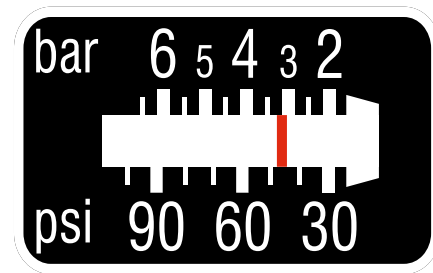
## TECHNICAL CHARACTERISTICS

	<i>DPR</i>
Power supply	1 ~ 110 ÷ 230 Vac (50/60 Hz)
Max. current intensity	16 A; $\cos \phi \geq 0,6$
Power	2,2 kW (3 HP)
Start pressure range	2 ÷ 6 bar / 29 ÷ 87 psi
Outlet pressure range ( $P_{out}$ )	0,5 ÷ 5,5 bar / 7,5- 80 psi
Protection degree	IP65
Max. temperature	122 °F
Max. pressure	10 bar / 145 psi
Inlet and outlet thread	NPT1"
Net weight (without cables)	4.4 lbs

## CONTROL PANEL



## OUTLET PRESSURE INDICATOR



## DIMENSIONS

